

Your path
starts here

Content

HELLO
AANII [AWE-NEE]
HÁU [HOW]
OKI [OH-KEE]
TAANSHI [TAWN-SHI]
TÂN'SI [TAHN-SEH]

- 2 START HERE**
explore, apply, register
- 4 MEET YOUR MATCH**
match your interests to our programs
- 8 FIND YOUR SUPPORT**
learn about academic support, mental health services,
financial aid, and more
- 10 BELONG WITH US**
connect with campus life
- 13 LIVE HERE**
your home away from home
- 18 WORK HARD, PLAY HARD**
join ratters athletics
- 20 EXPLORE PATHWAYS**
review admission requirements for all college programs
- 33 APPLY TO MHC**

Medicine Hat College acknowledges and honours the traditional territories of the First Nation People of Treaty 7 and Treaty 4, and of the Métis people who share a deep history with this land. We recognize and honour the land, history, ways of being, and our relationship with First Nation, Métis, and Inuit people as we forge together towards a relationship of reconciliation, respect, understanding, and healing.



Start here

Congratulations! You've made the decision to pursue education to help build your bright future. MHC has a variety of certificate, diploma, degree, university studies, and trades programs to match your interests and goals. Whether you already know your program or are still exploring everything MHC has to offer, use this timeline to guide you through the post-secondary process.

Not sure where to start? Visit www.mhc.ab.ca/careercoach.

1 EXPLORE

Campus Tours & Student for a Day

Get a feel for campus! Book a tour at any time or register as a Student for a Day throughout the year by calling **403.529.3819**.

Medicine Hat Campus Open House

November 8, 2023

Brooks Campus Open House

November 2, 2023

2 APPLY

Apply to the program of your choice at applyalberta.ca or visit us at an Open House! Application processing begins **October 3, 2023** for the 2024/2025 academic year.

Don't forget to apply for residence if you plan to live on campus.

3 ACCEPT

Check your email! A letter of acceptance will be emailed to you if your application is successful. Once you receive the letter of acceptance, you must confirm your seat by paying the deposit.

Visit www.mhc.ab.ca/apply for details.

4 FUND

Student loan applications open mid-June. To apply, please visit www.studentaid.alberta.ca.

Scholarship and bursary applications are accepted from **March 1 - June 1, 2024**. Apply for scholarships and bursaries at www.mhc.ab.ca/awards.

Questions? Contact our Financial Aid office: finaidinfo@mhc.ab.ca.

5 REGISTER

It's important to register early to ensure you get the classes you need, when you need them. Class registration opens **May 1, 2024** for the 2024/2025 academic year.

Questions? Contact our Registration office: registration@mhc.ab.ca.

6 START

Be sure to attend the following events for a smooth transition to college life!

Strike First

August 29 & 30, 2024

Beat the back-to-school rush and get your textbooks, student ID card and much more!

New Student Orientation

FALL: September 3, 2024

WINTER: January 3, 2025

Dive into your college experience and learn what to expect during your time at MHC.

DATES AT A GLANCE

OCTOBER 2023

Applications Open

NOVEMBER 2023

Medicine Hat Campus Open House
Brooks Campus Open House

MARCH 2024

Scholarship Applications Open

MAY 2024

Class Registrations Open

JUNE 2024

Student Loan Applications Open
Winter Intake Applications Open

AUGUST 2024

Strike First

SEPTEMBER 2024

New Student Orientation

JANUARY 2025

Winter New Student Orientation

Can't wait to see our campus?
Scan the QR code to take a virtual tour.



Meet your match

WHAT'S YOUR STORY?

Whether you are attending high school or thinking about a career change, you can benefit from connecting your personality, interests and values to educational opportunities.

The following is based on Holland's Theory of Career Choice which uses six personality types to measure an individual's characteristics and match them with careers. The theory assumes that when your natural characteristics are the same as your work environment needs, your satisfaction at work is greater.

Select 1-3 types that describe you best and match the colour of those types to the corresponding MHC programs. Remember, career planning is not a one-time activity, but a series of decisions made over your lifetime.

The Doers - Realistic people are interested in spending time outdoors, using tools to solve problems, and working on projects with concrete results. Realistic people tend to use common sense to solve problems and appreciate work environments that are organized and structured where they can fix, build, or repair things. Realistic people value tradition, practicality, and common sense.

The Thinkers - Investigative people are interested in solving problems through thinking using science, mathematics, writing, and research. Investigative people enjoy learning new facts and theories, researching, analyzing, and interpreting information. Investigative people value independence, curiosity, and learning.

The Creators - Artistic people are interested in self-expression, communication, culture, and unstructured creative activities. Artistic people enjoy using their imagination while observing and participating in a variety of artistic pursuits including visual, performing, and culinary arts as well as writing. Artistic people value beauty, originality, and independence.

The Helpers - Social people are interested in people, teamwork, helping, and community service. Motivated by helping and empowering others, Social people enjoy explaining, guiding, and using their insights to solve problems in collaborative and supportive environments. Social people value communication, cooperation, generosity, and service to others.

The Persuaders - Enterprising people are interested in leadership, business, and politics. Motivated by persuading and selling, Enterprising people enjoy managing projects and working with others and leading people towards goals and economic success. Enterprising people value competition, influence, status, and risk taking.

The Organizers - Conventional people are interested in organization, order, detail, and accuracy. Practical and precise, Conventional people prefer working in structured and predictable environments. Conventional people use information to solve problems efficiently. Conventional people value accuracy, stability, and efficiency.



student voice

EMMA MOURTON
Health Care Aide

"You're definitely going to take something away, whether it's new friends, new knowledge or a deeper understanding of people."

■ Dominant Characteristic
● Secondary Characteristic

PROGRAMS

- ● **Administrative Office Management** DIPLOMA
- ● **Administrative Office Professional** CERTIFICATE
- ● **Advanced Accounting** POST-DIPLOMA CERTIFICATE
- ● **Art and Design** BACHELOR OF APPLIED ARTS
- ● **Arts** UNIVERSITY STUDIES
- ● **Automotive Service Technician** APPRENTICESHIP
- ● **Aviation Management** CERTIFICATE
- ● **Built Environment Engineering Technology (BEET)** DIPLOMA
- ● **Business Administration** DIPLOMA
- ● **Carpenter** APPRENTICESHIP
- ● **Child and Youth Care Counsellor** DIPLOMA
- ● **Commerce/Management** UNIVERSITY STUDIES
- ● **Computer Aided Drafting and Design [CADD]** CERTIFICATE
- ● **Criminal Justice** DIPLOMA
- ● **Early Learning and Child Care** CERTIFICATE AND DIPLOMA
- ● **Education** BACHELOR OF
- ● **Electrician** APPRENTICESHIP
- ● **Environmental Biology & Reclamation Technology** DIPLOMA
- ● **Fine Arts** UNIVERSITY STUDIES
- ● **Health Care Aide** CERTIFICATE
- ● **Heavy Equipment Technician** APPRENTICESHIP
- ● **Humanities & Social Sciences** DIPLOMA
- ● **Information Technology** DIPLOMA
- ● **Intermediate Accounting** POST-DIPLOMA CERTIFICATE
- ● **Kinesiology** DIPLOMA* AND UNIVERSITY STUDIES
- ● **Nursing** BACHELOR OF
- ● **Occupational/Physical Therapist Assistant** DIPLOMA
- ● **Paramedic** BACHELOR OF APPLIED HEALTH SCIENCE
- ● **Plumber/Gasfitter** APPRENTICESHIP
- ● **Power Engineering Technology** DIPLOMA
- ● **Practical Nurse** DIPLOMA
- ● **Pre-Professional Programs (dentist, dental hygiene, medicine, pharmacy, vet)** UNIVERSITY STUDIES
- ● **Science** UNIVERSITY STUDIES
- ● **Service Dog and Canine Studies Management** DIPLOMA
- ● **Social Work** DIPLOMA
- ● **Speech Language Pathologist Assistant** DIPLOMA
- ● **Sport & Event Marketing and Management** DIPLOMA
- ● **Steamfitter/Pipefitter** APPRENTICESHIP
- ● **Sustainable Innovation** DIPLOMA
- ● **Welder** APPRENTICESHIP

*Pending government approval

Looking for more career resources? Visit www.mhc.ab.ca/careercoach.



For more detailed information on Medicine Hat College programs, refer to page 22 or visit www.mhc.ab.ca/programs.

Love to learn



HANDS-ON. PERSONAL. CONNECTED.

Learning at MHC is all about providing rich experiences that support your chosen path. Whether that path starts and ends here at MHC or leads you down new roads, we have the certificate, diploma, degree, apprenticeship and university studies programs that can get you where you want to go.

If a career in health care is your calling, our simulation labs will put you in the driver's seat of an ambulance or bedside as you deliver a baby. For those with a creative flair, collaborate with your classmates on an immersive art gallery experience. Passionate about the environment? Apply your classroom learning to local research opportunities. Have an interest in trades, technology or innovation? Engineering, computer programming and apprenticeship training are all here too. And if further education is in your future, build a solid foundation in university studies programs that set you up for success when the time comes to move on from MHC.

WORK INTEGRATED LEARNING

Work Integrated Learning (WIL) is all about taking lessons learned in the classroom and applying them to real world experiences. Through hands-on learning and opportunities to create relationships with employers and community partners, students are able to build valuable skills, knowledge and connections that support their success.

From practicums and clinical placements to internships and co-ops, WIL is available in many MHC programs. **Ask about WIL opportunities available in your program(s) of interest!**



1567 WORK INTEGRATED LEARNING EXPERIENCES FOR MHC STUDENTS IN 2022-23



88% OF EMPLOYED GRADUATES ARE IN THEIR FIELD OF STUDY
*BASED ON 2022 GRADUATE SURVEY



97% OF GRADUATES WOULD RECOMMEND MHC
*BASED ON 2022 GRADUATE SURVEY

Find your support



MHC STUDENTS RECEIVED ALMOST \$1 MILLION IN SCHOLARSHIPS, BURSARIES AND OTHER AWARDS IN 2022/23

SUPPORTS AND SERVICES

Your education is important to us and we're here to help. Find the support you need to be successful in your program with everything from academic advising and coaching to accessibility services, tutoring and so much more.

But it's not just about classrooms and coursework. We know that with college comes new experiences, new expectations and new challenges. For the times when you need to talk things through, we're here with free counselling and mental health programs, spiritual services, and peer support to help you balance your life in and outside of school.

DON'T WORRY, YOU'VE GOT THIS.

For a full list of supports and services, visit www.mhc.ab.ca/studentlife.

FINANCIAL AID

Learn how you can fund your education! Our Student Financial Aid team can help you understand the student loan process and provide access to financial award opportunities.

MHC students received almost \$1 million in scholarships, bursaries and other awards in 2022/23. Awards are based on different criteria including academic performance, financial need, extracurricular activities, volunteerism, and athletics, so there is plenty of opportunity for students to access additional funding.

Applying for awards is quick and easy! For more info, visit www.mhc.ab.ca/awards. Award applications are accepted from **March 1 – June 1, 2024.**

APPROXIMATE COST OF 1ST YEAR TUITION AND FEES

 RESIDENCE (OPTIONAL)
\$5000

+

 BOOKS
\$1600

+

 TUITION
\$5000

FOR MORE DETAILED INFORMATION ON PROGRAM TUITION AND FEES, VIEW OUR COST ESTIMATE CHARTS AT WWW.MHC.AB.CA.

WELLNESS

State-of-the-art equipment and bright open spaces will move your workout to the next level in MHC's new Fitness Centre! You can also take advantage of free group fitness classes throughout the fall and winter semesters, plus enjoy beautiful outdoor spaces and trails year round.

Studying at Brooks Campus? Enjoy free access to the onsite gym and discounted rates at the JBS Canada Centre, just minutes away in downtown Brooks.



Belong with us



CAMPUS COMMUNITY

MHC is a close knit community that offers a variety of ways to connect and engage. From student governance to the ambassador program, there are many opportunities to be involved and make the most of your college experience!

The **Students' Association at Medicine Hat College (SAMHC)** is your connection to campus life. SAMHC serves as a voice for all students and plans special events that celebrate diversity, create awareness, and engage the college community. Interested in joining or starting a student club? Have questions about academic processes, need to talk to a peer supporter or require health and dental benefits? Maybe you just want to meet people and have fun. Whatever you're looking for, SAMHC is a good place to start! Visit samhc.ca for details.

The **ambassador program** is a great way for you to share your passion for MHC and maximize your student experience! Volunteer for events, gain valuable skills and make new friends as a student ambassador. Visit www.mhc.ab.ca/ambassadors for more info.

CULTURAL CONNECTIONS

In Fall 2022, Medicine Hat College celebrated the grand opening of Co-op Wellness Commons. At the heart of this facility is a unique gathering space dedicated to Indigenous teaching, learning and events. The space formally received its name, Ómahksipiitaa, which means Big Eagle, from Blackfoot Elders at a special naming ceremony, and has been a hub of cultural education and connection ever since.

MHC's Indigenous Engagement & Student Supports office provides a safe and supportive environment for Indigenous students and connects them to college and community resources like financial aid and wellness. It also assists with the education and integration of Indigenous culture on campus by hosting guest speakers, workshops, and events that increase awareness and understanding of Indigenous issues, traditions, and history within the college and community.



@artdesignmhc

Follow the art and design students on Instagram to get an inside look at the program.



300

STUDENTS LIVE IN RESIDENCE



**2 MIN
WALK TO
CLASS**

TAKE A WALK THROUGH
RESIDENCE. SCAN THE CODES
BELOW TO TAKE A VIRTUAL TOUR.



GOLFVIEW
RESIDENCE

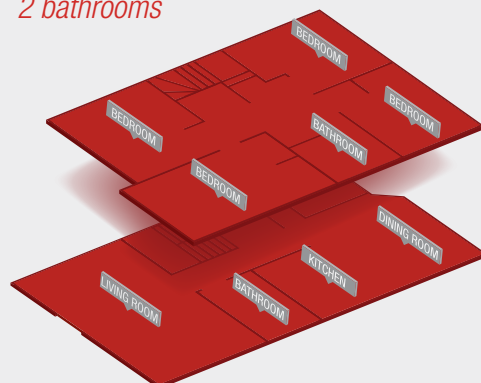


COULEEVUE
RESIDENCE

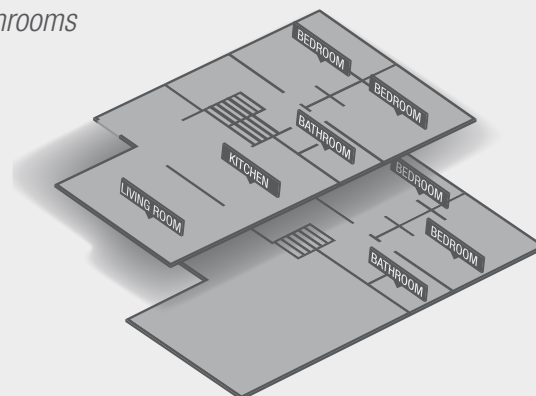
WWW.MHC.AB.CA/VIRTUALTOUR



GOLFVIEW
4 bedrooms
2 bathrooms



COULEEVUE
4 bedrooms
2 bathrooms



Live here

YOUR HOME AWAY FROM HOME

Live the ultimate college experience! Independence, convenience, and affordability are yours when living in residence at MHC. Connect with a close knit community and create friendships that will last a lifetime.

Accommodations are comfortable, four-bedroom, fully furnished townhouse units in two complexes—Golfview and Couleevue. Each bedroom is equipped with a bed, desk, and closet. Each unit is furnished with a WiFi router, washer and dryer, living room furniture, kitchen appliances, deep freezer, vacuum

cleaner, and storage space. Just bring bedding, kitchen utensils, dishes and other personal effects and you're ready to move in!

We also have eight four-bedroom units at our Brooks Campus that offer the same amenities.

With a two minute walk to classes and rent as low as **\$640/month** including utilities and WiFi, living on campus just makes sense.

Find out more at www.mhc.ab.ca/studentlife.

? **DID YOU KNOW**
RESIDENCE ASSISTANTS LIVE ONSITE AND PROVIDE SUPPORT AND SECURITY FOR STUDENTS IN OUR RESIDENCE COMMUNITIES.

A great place to call home



MEDICINE HAT

tourismmedicinehat.com

Whether you already call Medicine Hat home or are ready to make a move, this warm and welcoming community in Southeast Alberta has everything you need and more. There are endless opportunities to be active and enjoy the great outdoors with the city's extensive trail system, golf courses, and green spaces. Medicine Hat also boasts a vibrant arts and entertainment scene featuring exceptional musical talent, sporting events, and high profile shows at the Esplanade Arts & Heritage Centre, Co-op Place, and other venues around the city.

With all the amenities of a larger centre plus the advantages of living in a smaller community, like short commutes and affordable accommodations, there's lots to love about The Hat.

Located less than 300 kilometres from Calgary and 50 kilometres from the Saskatchewan border, Medicine Hat is well-positioned along the Trans-Canada Highway with easy access to the Cypress Hills and the United States.

BROOKS

brooksregion.ca

Some of MHC's programming is offered at our Brooks Campus, located 100 kilometres west of Medicine Hat. Brooks is a vibrant, diverse community rich in culture and western hospitality with easy access to world-renowned attractions.

MEDICINE HAT IS CANADA'S SUNNIEST CITY WITH 2,512 HOURS OF SUNSHINE PER YEAR



*PHOTO CREDIT: TOURISM MEDICINE HAT



Experience Adventure

ALI MULLIN

Education Abroad: New Zealand

"I chose to study abroad because I've always been interested in places and cultures around the world. It opened my mind to different ways of thinking and different concepts of 'normal.' It was amazing to realize how this knowledge and understanding can inform the way that I move forward in my life and career."



student
voice



HAWA KAMARA

Education Abroad: South Korea

"My experience in South Korea shaped and influenced my teaching philosophy. I am now a firm believer in stepping out of my comfort zone and exploring other parts of Canada. This mindset has a lot to do with my trip to South Korea and being able to experience that culture. Now I am in the Northwest Territories growing, learning, as well as teaching my own ideas and culture to my students; doing this has enabled me to better connect with my students."

INTERNATIONAL / EDUCATION ABROAD

see the world

MHC's international activity is guided by the philosophy that education and learning is greatly enhanced by an understanding of different cultures, languages, and peoples.

Education Abroad programs provide students with opportunities to develop the skills and attitudes required to function successfully in an interconnected global society, world, and economy. Choose from semester or summer exchange programs or participate in virtual exchange activities.

MHC has partnerships
with over 30 institutions
in more than 15 countries
around the world.



Work hard, play hard



BASKETBALL
(MEN'S AND WOMEN'S TEAM)



CROSS-COUNTRY RUNNING
(MEN'S AND WOMEN'S TEAM)



GOLF
(MEN'S AND WOMEN'S TEAM)



SOCCER/FUTSAL
(MEN'S AND WOMEN'S TEAM)



VOLLEYBALL
(MEN'S AND WOMEN'S TEAM)



HOCKEY
(WOMEN'S TEAM)

RATTLERS ATHLETICS

Medicine Hat College has a proud tradition of athletics, leadership and community engagement. As Southeast Alberta's team, our Rattlers athletes bring their best in basketball, cross-country running, futsal, golf, soccer, volleyball, and women's hockey and demonstrate excellence in competition and in the classroom.

The Snake Pit is the place to be on game day so gather your friends, grab your noisemaker and get Rowdy! Admission to regular season home games is free for MHC students.



Want to be even closer to the action? If you think you've got what it takes to be a Rattler, connect with our athletics department to learn more about recruitment opportunities.



RATTLERS.CA

ROWDY THE RATTLER



Explore Pathways

ADMISSION CHARTS

program admission requirements

It's never too early to start planning for your future. Prepare for your MHC experience today by understanding the admission process and requirements for your chosen program.

PROGRAMS OF STUDY

MHC has a variety of certificate, diploma, degree, university studies, and trades programs to meet your needs.

CERTIFICATE

Program Length: 1 year

Certificate programs allow students to train for a specific career in a very short period of time.

DIPLOMA

Program Length: 2 years

Diploma programs prepare students for careers or further study.

APPLIED DEGREE

Program Length: 3 years

Applied degrees combine academic education with practical, on-the-job training.

DEGREE

Program Length: 4 years

Degree programs are offered on campus in partnership with other Alberta universities, allowing students to complete a full degree in Medicine Hat.

UNIVERSITY STUDIES

Program Length: 1-2 years

University Studies allow students to start their degree at MHC by building an individualized program that supports their transfer to a university.

APPRENTICESHIP

Program Length: 3-4 years

Apprenticeship is a combination of on-the-job and technical training that leads to certification as a journeyman.

MORE WAYS TO LEARN

Flex

FLEXIBLE LEARNING

Flexible learning is a delivery method that combines online and face-to-face learning for maximum flexibility. Students can choose to study 100% online or in person, or take advantage of both methods to accommodate their individual schedules.

CONTINUING STUDIES

Whether you're looking to advance your career, develop new skills, or learn about emerging industries & technologies, continuing studies provides courses when, where, and how you need them.

MICROCREDENTIALS

Focused on specific skills and competencies, microcredentials are short, concentrated groups of courses that respond to industry needs. With flexible delivery and scheduling options, microcredentials can offer a customized approach to the evolving needs of learners.

Explore your career options, visit
www.mhc.ab.ca/careercoach.



CERTIFICATES & DIPLOMAS

1-2 year programs

CERTIFICATES & DIPLOMAS

1-2 year programs

PROGRAM	LENGTH	ALBERTA ADMISSION REQUIREMENTS	SASKATCHEWAN ADMISSION REQUIREMENTS	MATURE ADMISSION REQUIREMENTS (AGE 21 OR OLDER)	CAREER OPPORTUNITIES
ADMINISTRATIVE OFFICE PROFESSIONAL CERTIFICATE Also offered online	1 YEAR	<ul style="list-style-type: none"> • ELA 30-1 or ELA 30-2 • Math 10C 	<ul style="list-style-type: none"> • ELA A30 & B30 • Math Foundations and Pre-Calculus 10 	<ul style="list-style-type: none"> • ELA 30-1 or ELA 30-2 • Math 10C 	Graduates of the Administrative Office Professional program are prepared for entry level positions in a variety of office environments including accounting, education, and agriculture.
ADMINISTRATIVE OFFICE MANAGEMENT DIPLOMA	2 YEARS	A keyboarding speed of 20 wpm with 90% accuracy is recommended.	Keyboarding speed of 20 wpm with 90% accuracy is recommended.	Keyboarding speed of 20 wpm with 90% accuracy is recommended.	The Administrative Office Management program develops an enhanced skill-set to increase potential for obtaining a supervisory or managerial position in an office environment.
ADVANCED ACCOUNTING POST-DIPLOMA CERTIFICATE	1 YEAR	Graduation from a Business Administration diploma in Accounting or equivalent at an accredited post-secondary institution with completion of the following courses (or their equivalents) with a grade of C (60%) or higher: <ul style="list-style-type: none"> • ACCT 213 & ACCT 215 • MGMT 284 & MGMT 285 • FINA 255 	Graduation from a Business Administration diploma in Accounting or equivalent at an accredited post-secondary institution with completion of the following courses (or their equivalents) with a grade of C (60%) or higher: <ul style="list-style-type: none"> • ACCT 213 & ACCT 215 • MGMT 284 & MGMT 285 • FINA 255 	Graduation from a Business Administration diploma in Accounting or equivalent at an accredited post-secondary institution with completion of the following courses (or their equivalents) with a grade of C (60%) or higher: <ul style="list-style-type: none"> • ACCT 213 & ACCT 215 • MGMT 284 & MGMT 285 • FINA 255 	Career opportunities for graduates may include accounting technician, accounts payable or accounts receivable clerk, bookkeeper, or CPA trainee.
AVIATION MANAGEMENT CERTIFICATE Refer to Super T Aviation for additional requirements for Integrated Flight Training	1-2 YEARS	High school diploma with: <ul style="list-style-type: none"> • ELA 30-1 or ELA 30-2 • Math 30-1 or Math 30-2 • Science 30 or Physics 20 	High school diploma with: <ul style="list-style-type: none"> • ELA A30 & B30 • Pre-Calculus 30 or Foundations of Math 30 • Earth Science 30 or Physical Science 20 	<ul style="list-style-type: none"> • ELA 30-1 or ELA 30-2 • Math 30-1 or Math 30-2 • Science 30 or Physics 20 	Aviation Management graduates who also complete flight training may find employment as a flight instructor, Medevac pilot, charter pilot, or commuter pilot for smaller airlines.
BUILT ENVIRONMENT ENGINEERING TECHNOLOGY (BEET) DIPLOMA	2 YEARS	High school diploma with: <ul style="list-style-type: none"> • ELA 30-1 or ELA 30-2 • Math 30-1 or Math 30-2 • Physics 20 	High school diploma with: <ul style="list-style-type: none"> • ELA A30 & B30 • Pre-Calculus 30 or Foundations of Math 30 • Physical Science 20 	<ul style="list-style-type: none"> • ELA 30-1 or ELA 30-2 • Math 30-1 or Math 30-2 • Physics 20 	Career opportunities may be found working with consulting engineers, architects and land surveyors in a variety of industries and sectors including oil and gas, mining and manufacturing, product and equipment design and manufacturing, and all levels of government.
BUSINESS ADMINISTRATION DIPLOMA	2 YEARS	<ul style="list-style-type: none"> • ELA 30-1 or ELA 30-2 • Math 30-1 or Math 30-2 • Two 30-level, 5-credit subjects 	<ul style="list-style-type: none"> • ELA A30 & B30 • Pre-Calculus 30 or Foundations of Math 30 • Two 30-level subjects 	<ul style="list-style-type: none"> • ELA 30-1 or ELA 30-2 • Math 30-1 or Math 30-2 	Accounting Major: Graduates are prepared to find work as an accounting technician, accounts payable or accounts receivable clerk, bookkeeper, or CPA trainee. Financial Services Major: Graduates are prepared for financial advisor, credit officer, or loans officer positions. Management Major: Employment may be found as an office manager or project coordinator. Marketing Major: Possible career opportunities may include promotions coordinator, public relations assistant, or event marketing representative.
CHILD & YOUTH CARE COUNSELLOR DIPLOMA	2 YEARS	<ul style="list-style-type: none"> • ELA 30-1 (min. 60%) or ELA 30-2 (min. 70%) • One 30-level academic subject (min. 60%) • Three 30-level, 5-credit subjects (min. 60%), with a maximum of 5-credits of CTS courses 	<ul style="list-style-type: none"> • ELA A30 & B30 (min. 60%) • One 30-level academic subject (min. 60%) • Three 30-level subjects (min. 60%) 	<ul style="list-style-type: none"> • ELA 30-1 (min. 60%) or ELA 30-2 (min. 60%) • One 30-level academic subject 	Job opportunities may be found in group homes, residential treatment centres, institutional or young offender settings, and mental health centres facilitating a variety of activity including outreach/street programs, family and community based programs, therapeutic foster care, or day treatment programs.
COMPUTER AIDED DRAFTING & DESIGN CERTIFICATE	1 YEAR	High school diploma with: <ul style="list-style-type: none"> • ELA 30-1 or ELA 30-2 • Math 30-1 or Math 30-2 • Physics 20 	High school diploma with: <ul style="list-style-type: none"> • ELA A30 & B30 • Pre-Calculus 30 or Foundations of Math 30 • Physical Science 20 	<ul style="list-style-type: none"> • ELA 30-1 or ELA 30-2 • Math 30-1 or Math 30-2 • Physics 20 	Career opportunities may be found working with consulting engineers, architects and land surveyors in a variety of industries and sectors including oil and gas, mining and manufacturing, product and equipment design and manufacturing, and all levels of government.
CRIMINAL JUSTICE DIPLOMA	2 YEARS	<ul style="list-style-type: none"> • ELA 30-1 (min. 60%) or ELA 30-2 (min. 65%) 	<ul style="list-style-type: none"> • ELA A30 & B30 (min. 60%) 	<ul style="list-style-type: none"> • ELA 30-1 (min. 60%) or ELA 30-2 (min. 65%) 	For graduates of the Criminal Justice program, careers may include police officer, crime analyst, private or corporate investigator, correctional/parole/probation officer, youth worker or customs officer.
EARLY LEARNING & CHILD CARE CERTIFICATE / DIPLOMA	1 YEAR 2 YEARS	High school diploma with: <ul style="list-style-type: none"> • ELA 30-1 (min. 50%) or ELA 30-2 (min. 65%) 	High school diploma with: <ul style="list-style-type: none"> • ELA A30 & B30 (min. 50%) 	<ul style="list-style-type: none"> • ELA 30-1 (min. 50%) or ELA 30-2 (min. 65%) 	Job opportunities may be found with preschools, child care centres, family day homes, out of school care, and assistants in kindergarten programs.
ENVIRONMENTAL BIOLOGY AND RECLAMATION TECHNOLOGY DIPLOMA (formerly Environmental Reclamation Technician)	2 YEARS	High school diploma with: <ul style="list-style-type: none"> • ELA 30-1 (min. 50%) or ELA 30-2 (min. 60%) • Biology 20 (min. 55%) • Chemistry 30 (min. 55%) or Science 30 (min. 55%) • Math 30-1 (min. 55%) or Math 30-2 (min. 55%) 	High school diploma with: <ul style="list-style-type: none"> • ELA A30 & B30 (min. 50%) • Environmental Science 20 (min. 55%) or Health Science 20 (min. 55%) [Recommended Environmental Science 20] • Chemistry 30 (min. 55%) or Earth Science 30 (min. 55%) • Pre-Calculus 30 (min. 55%) or Foundations of Math 30 (min. 55%) 	<ul style="list-style-type: none"> • ELA 30-1 (min. 50%) or ELA 30-2 (min. 60%) • Biology 20 (min. 55%) • Chemistry 30 (min. 55%) or Science 30 (min. 55%) • Math 30-1 (min. 55%) or Math 30-2 (min. 55%) 	Graduates of Environmental Biology and Reclamation Technology are prepared for field-based or office-based work with private or government agencies involved with environmental monitoring, site mediation and reclamation, resource reclamation, well decommissioning, or environmental impact and audit studies.

Flex

Flex

Flex



Scan the QR code to watch the video.

*FOR OTHER PROVINCIAL EQUIVALENCIES AND A LIST OF ACADEMIC SUBJECTS, SEE PAGE 31.

CERTIFICATES & DIPLOMAS

1-2 year programs

CERTIFICATES & DIPLOMAS

1-2 year programs

PROGRAM	LENGTH	ALBERTA ADMISSION REQUIREMENTS	SASKATCHEWAN ADMISSION REQUIREMENTS	MATURE ADMISSION REQUIREMENTS (AGE 21 OR OLDER)	CAREER OPPORTUNITIES
HEALTH CARE AIDE CERTIFICATE Offered at both Medicine Hat Campus and Brooks Campus for Fall intake Available blended (online/in-person) for Winter intake	1 YEAR	One of the following: • ELA 20-1 (min. 60%) or ELA 20-2 (min. 60%) OR • ELA 30-1 (min. 55%) or ELA 30-2 (min. 55%) OR • Pass all five Canadian GED tests OR • ACCUPLACER reading and writing tests with a minimum score of 237 in each category	One of the following: • ELA 20 (min. 60%) OR • ELA A30 & B30 (min. 55%) OR • Pass all five Canadian GED tests OR • ACCUPLACER reading and writing tests with a minimum score of 237 in each category	One of the following: • ELA 20-1 (min. 60%) or ELA 20-2 (min. 60%) OR • ELA 30-1 (min. 55%) or ELA 30-2 (min. 55%) OR • Pass all five Canadian GED tests OR • ACCUPLACER reading and writing tests with a minimum score of 237 in each category	Career opportunities for Health Care Aide graduates can be found in continuing care facilities, assisted living facilities, and community agencies and with government or private individuals.
HUMANITIES & SOCIAL SCIENCES DIPLOMA	2 YEARS	• ELA 30-1 • Math 30-1 or Math 30-2 or a 30-level second language • Two 30-level academic subjects • One 30-level, 5-credit subject (excluding Special Projects)	• ELA A30 & B30 • Pre-Calculus 30 or Foundations of Math 30 or a 30-level second language • Two 30-level academic subjects • One 30-level subject (excluding Special Projects)	• ELA 30-1 • One 30-level academic subject	Graduates are prepared with fundamental, personal management, and team work skills that are required for the rapidly changing workplace and can be applied to a variety of career environments.
INFORMATION TECHNOLOGY CERTIFICATE / DIPLOMA	1 YEAR 2 YEARS	• ELA 30-1 (min. 50%) or ELA 30-2 (min. 60%) • Math 30-1 (min. 50%) or Math 20-1 (min. 65%) or Math 30-2 (min. 65%)	• ELA A30 & B30 (min. 50%) • Pre-Calculus 30 (min. 50%) or Pre-Calculus 20 (min. 65%) or Foundations of Math 30 (min. 65%)	• ELA 30-1 (min. 50%) or ELA 30-2 (min. 60%) • Math 30-1 (min. 50%) or Math 20-1 (min. 65%) or Math 30-2 (min. 65%)	Graduates may find employment in entry-level program and software development, web design and development, database development and software or computer sales and support.
INTERMEDIATE ACCOUNTING POST-DIPLOMA CERTIFICATE NEW	1 YEAR	Graduation from a Business Administration degree, diploma or equivalent at an accredited post-secondary institution with completion of the following courses (or their equivalents): • ACCT 113 or ACCT 321	Graduation from a Business Administration degree, diploma or equivalent at an accredited post-secondary institution with completion of the following courses (or their equivalents): • ACCT 113 or ACCT 321	Graduation from a Business Administration degree, diploma or equivalent at an accredited post-secondary institution with completion of the following courses (or their equivalents): • ACCT 113 or ACCT 321	Career opportunities may include accounting technician, accounts payable or accounts receivable clerk, bookkeeper, and CPA trainee.
KINESIOLOGY DIPLOMA <i>Pending government approval</i> NEW	2 YEARS	A minimum of 60% in: • ELA 30-1 • Biology 30 • Math 30-1, Math 30-2 or a 30-level Science • One 30-level academic subject • One 30-level, 5-credit subject (excluding Special Projects)	A minimum of 60% in: • ELA A30 & B30 • Biology 30 • Pre-Calculus 30, Foundations of Math 30 or a 30-level Science • One 30-level academic subject • One 30-level subject (excluding Special Projects)	• ELA 30-1 • Biology 30	Completion of a Kinesiology diploma prepares graduates to work as entry-level exercise professionals in a variety of fitness, health, sports, and recreation environments. Employment opportunities may include fitness programmer, personal trainer, wellness specialist, coach or sports program supervisor. Graduates can also obtain the Certified Personal Trainer certification through the Canadian Society of Exercise Physiology.
OCCUPATIONAL / PHYSICAL THERAPIST ASSISTANT DIPLOMA Also offered online	2 YEARS	High school diploma with a minimum of 60% in: • ELA 30-1 • Biology 30 • Math 30-1, Math 30-2 or a 30-level Science • One 30-level, 5-credit subject	High school diploma with a minimum of 60% in: • ELA A30 & B30 • Biology 30 • Pre-Calculus 30, Foundations of Math 30 or a 30-level Science • One 30-level subject	A minimum of 60% in: • ELA 30-1 • Biology 30	Graduates may find employment with health regions and hospitals, rehabilitation centres, continuing care facilities, schools, community and government health agencies, or vocational rehabilitation programs.
POWER ENGINEERING DIPLOMA	2 YEARS	High school diploma and a minimum of 60% in: • ELA 30-1 • Math 30-1 or Math 30-2 • Physics 30	High school diploma and a minimum of 60% in: • ELA A30 & B30 • Pre-Calculus 30 or Foundations of Math 30 • Physics 30	• ELA 30-1 • Math 30-1 or Math 30-2 • Physics 30	Power Engineering Technology graduates are prepared for employment at gas plants, oil refineries, petrochemical processing plants, fertilizer production or power generating plants, and building complexes.
* PRACTICAL NURSE DIPLOMA Offered at Brooks Campus for Fall intake and Medicine Hat Campus for Winter intake	2 YEARS	• ELA 30-1 (min. 60%) or ELA 30-2 (min. 70%) • Math 20-1 (min. 60%) or Math 20-2 (min. 70%) • Biology 30 (min. 60%)	• ELA A30 & B30 (min. 60%) • Pre-Calculus 20 (min. 60%) or Foundations of Math 20 (min. 70%) • Biology 30 (min. 60%)	• ELA 30-1 (min. 60%) or ELA 30-2 (min. 70%) • Math 20-1 (min. 60%) or Math 20-2 (min. 70%) • Biology 30 (min. 60%)	Graduates of the Practical Nurse program may find career opportunities in hospitals, medical clinics, continuing care facilities, assisted living facilities, and community agencies.
SERVICE DOG & CANINE STUDIES MANAGEMENT DIPLOMA NEW	2 YEARS	• ELA 30-1 or ELA 30-2 • Science 30 or Biology 20 • One 30-level, 5 credit subject	• ELA A30 & B30 • Health Sciences 20, Environmental Science 20 or Earth Science 30 [Recommended: Health Sciences 20] • One 30-level subject with 50% or better	• ELA 30-1 or ELA 30-2 • Any 30-level Science is recommended	Career opportunities may include owning and operating a kennel, dog grooming business, or training operation, or training dogs that assist individuals living with a variety of disabilities including autism, PTSD, diabetes, epilepsy, those who are hard of hearing, or have physical or medical disabilities.



Scan the QR code to watch the video.

* COMPETITIVE ENTRANCE (REFER TO PAGE 31 FOR MORE DETAILS)

*FOR OTHER PROVINCIAL EQUIVALENCIES AND A LIST OF ACADEMIC SUBJECTS, SEE PAGE 31.

CERTIFICATES & DIPLOMAS

1-2 year programs

CERTIFICATES & DIPLOMAS

1-2 year programs

PROGRAM	LENGTH	ALBERTA ADMISSION REQUIREMENTS	SASKATCHEWAN ADMISSION REQUIREMENTS	MATURE ADMISSION REQUIREMENTS (AGE 21 OR OLDER)	CAREER OPPORTUNITIES
SOCIAL WORK DIPLOMA APPLICATION DEADLINE MAY 1	2 YEARS	A minimum of 60% in each of the following: <ul style="list-style-type: none"> • ELA 30-1 • Two 30-level academic subjects • One 30-level, 5-credit subject 	A minimum of 60% in each of the following: <ul style="list-style-type: none"> • ELA A30 & B30 • Two 30-level academic subjects • One 30-level subject 	A minimum of 60% in each of the following: <ul style="list-style-type: none"> • ELA 30-1 or transferrable equivalent • Two 30-level academic subjects or post-secondary transfer courses 	Graduates may find employment with government departments, school boards, group homes and residential services, health and mental health agencies, family and social service agencies, employment assistance, correctional services and agencies, addictions services, or non-profit community agencies.
SPEECH-LANGUAGE PATHOLOGIST ASSISTANT DIPLOMA Also offered online	2 YEARS	High school diploma with a minimum of 60% in: <ul style="list-style-type: none"> • ELA 30-1 • Biology 30 • Math 30-1, Math 30-2 or a 30-level Science • One 30-level, 5-credit subject 	High school diploma with a minimum of 60% in: <ul style="list-style-type: none"> • ELA A30 & B30 • Biology 30 • Pre-Calculus 30, Foundations of Math 30 or a 30-level Science • One 30-level subject 	A minimum of 60% in: <ul style="list-style-type: none"> • ELA 30-1 • Biology 30 	Speech Language Pathologist Assistants are prepared to find employment with health regions, hospitals, schools, day cares and preschools, rehabilitation centres, and private practices.
SPORT & EVENT MARKETING AND MANAGEMENT DIPLOMA NEW	2 YEARS	<ul style="list-style-type: none"> • ELA 30-1 or ELA 30-2 • Two 30-level, 5-credit subjects 	<ul style="list-style-type: none"> • ELA A30 & B30 • Two 30-level subjects 	<ul style="list-style-type: none"> • ELA 30-1 or ELA 30-2 	Career opportunities may include entertainment account coordinator, sport/event marketing coordinator, experiential marketing or fan experience coordinator, social media/digital marketing coordinator, brand ambassador, recreation/athletics coordinator, or sports agent. Market research, advertising and sales, sponsorship, event management, public relations, or merchandising are examples of related activity.
SUSTAINABLE INNOVATION DIPLOMA NEW	2 YEARS	<ul style="list-style-type: none"> • ELA 30-1 or ELA 30-2 • Two 30-level, 5-credit subjects 	<ul style="list-style-type: none"> • ELA A30 & B30 • Two 30-level subjects 	<ul style="list-style-type: none"> • ELA 30-1 or ELA 30-2 	Possible careers include research and development coordinator, marketing and innovation project coordinator, service representative, or sustainable construction specialist.

Flex

Flex



Scan the QR code to watch the video.



Scan the QR code to watch the video.

APPLIED DEGREES & DEGREES

3-4 year programs

APPLIED DEGREES & DEGREES

3-4 year programs

PROGRAM	LENGTH	ALBERTA ADMISSION REQUIREMENTS	SASKATCHEWAN ADMISSION REQUIREMENTS	MATURE ADMISSION REQUIREMENTS (AGE 21 OR OLDER)	CAREER OPPORTUNITIES
ART & DESIGN, BACHELOR OF APPLIED ARTS	3 YEARS	<ul style="list-style-type: none"> • ELA 30-1 or ELA 30-2 	<ul style="list-style-type: none"> • ELA A30 & B30 	<ul style="list-style-type: none"> • ELA 30-1 or ELA 30-2 	Employment opportunities are available in a variety of workplace locations, including print shops, design studios, publishing houses, film studios, television stations, theatres, museums and art galleries, and other places involved in visual and digital production. Many Art & Design graduates have gone on to start their own graphic design, photography, and video production businesses.
* EDUCATION, BACHELOR OF IN PARTNERSHIP WITH MOUNT ROYAL UNIVERSITY	2 YEARS + 2 YEARS	To be eligible for admissions a student must have successfully completed 60 credits of approved university course work and meet competitive GPA. To complete university coursework, students will enroll in University Studies: Education for their first two years at MHC. Refer to University Studies: Education on page 28 for admission requirements.	To be eligible for admissions a student must have successfully completed 60 credits of approved university course work and meet competitive GPA. To complete university coursework, students will enroll in University Studies: Education for their first two years at MHC. Refer to University Studies: Education on page 28 for admission requirements.	To be eligible for admissions a student must have successfully completed 60 credits of approved university course work and meet competitive GPA. To complete university coursework, students will enroll in University Studies: Education for their first two years at MHC. Refer to University Studies: Education on page 28 for admission requirements.	Professional opportunities may include teacher, educational administrator or policy maker.
* NURSING, BACHELOR OF IN PARTNERSHIP WITH THE UNIVERSITY OF CALGARY APPLICATION DEADLINE MAY 1	4 YEARS	Overall average of 65% with no mark below 50% in: <ul style="list-style-type: none"> • ELA 30-1 • Biology 30 • Chemistry 30 • Math 30-1 or Math 30-2 • One 30-level, 5 credit subject 	Overall average of 65% with no mark below 50% in: <ul style="list-style-type: none"> • ELA A30 & B30 • Biology 30 • Chemistry 30 • Pre-Calculus 30 or Foundations of Math 30 • One 30-level subject 	Overall average of 65% with no mark below 50% in: <ul style="list-style-type: none"> • ELA 30-1 • Biology 30 • Chemistry 30 • Math 30-1 or Math 30-2 	Graduates may find employment with regional health authorities, clinics (medical, dental and community), nursing homes, home care agencies, large corporations and insurance companies, or government services (e.g. penitentiaries).
* PARAMEDIC, BACHELOR OF APPLIED HEALTH SCIENCE Students will be required to complete a computer based online assessment (CASPer Test) in addition to meeting competitive academic requirements. APPLICATION DEADLINE APRIL 20	4 YEARS	Overall average of 60% with no mark below 50% in: <ul style="list-style-type: none"> • ELA 30-1 • Biology 30 • Math 30-1 or Math 30-2 • One 30-level, 5 credit subject (Chemistry 30 is recommended) 	Overall average of 60% with no mark below 50% in: <ul style="list-style-type: none"> • ELA A30 & B30 • Biology 30 • Pre-Calculus 30 or Foundations of Math 30 • One 30-level subject (Chemistry 30 is recommended) 	Overall average of 60% with no mark below 50% in: <ul style="list-style-type: none"> • ELA 30-1 • Biology 30 • Math 30-1 or Math 30-2 	Graduates may find employment with public and private ambulance services provincially, nationally and internationally. Paramedics also work in a variety of industrial and community-based emergency health settings.

* COMPETITIVE ENTRANCE (REFER TO PAGE 31 FOR MORE DETAILS)

*FOR OTHER PROVINCIAL EQUIVALENCIES AND A LIST OF ACADEMIC SUBJECTS, SEE PAGE 31.

UNIVERSITY STUDIES

start your degree here

UNIVERSITY STUDIES

start your degree here

PROGRAM	ALBERTA ADMISSION REQUIREMENTS	SASKATCHEWAN ADMISSION REQUIREMENTS	MATURE ADMISSION REQUIREMENTS (AGE 21 OR OLDER)	CAREER OPPORTUNITIES
ARTS VARIETY OF MAJORS	<ul style="list-style-type: none"> • ELA 30-1 • Math 30-1 or Math 30-2 or a 30-level second language • Two 30-level academic subjects • One 30-level, 5 credit subject (excluding Special Projects) <p><i>NOTE: Some majors at some universities require Math 30-1 or Math 30-2.</i></p>	<ul style="list-style-type: none"> • ELA A30 & B30 • Pre-Calculus 30 or Foundations of Math 30 or a 30-level second language • Two 30-level academic subjects • One 30-level subject (excluding Special Projects) <p><i>NOTE: Some majors at some universities require Pre-Calculus 30 or Foundations of Math 30.</i></p>	<ul style="list-style-type: none"> • ELA 30-1 • One 30-level academic subject <p><i>NOTE: Some majors at some universities require Math 30-1 or Math 30-2.</i></p>	<p>An education in Arts can serve as the foundation for many different areas of interest. Some professional degree programs offered at universities, such as Law, require a degree in a discipline such as Arts before admission is granted.</p>
COMMERCE / MANAGEMENT	<ul style="list-style-type: none"> • ELA 30-1 • Math 30-1 • Two 30-level academic subjects • One 30-level, 5 credit subject (excluding Special Projects) 	<ul style="list-style-type: none"> • ELA A30 & B30 • Pre-Calculus 30 • Two 30-level academic subjects • One 30-level subject (excluding Special Projects) 	<ul style="list-style-type: none"> • ELA 30-1 • Math 30-1 	<p>Depending on the chosen major, graduates of a Commerce, Business Administration or Management degree program may find work as an accounting technician, event marketing representative, marketing researcher, accounts manager trainee, event coordinator, merchandiser/buyer, accounts payable or accounts receivable clerk, office manager or fundraiser.</p>
EDUCATION APPLICATION DEADLINE MAY 1	<ul style="list-style-type: none"> • ELA 30-1 (min. 60%) • Three 30-level academic subjects • One 5-credit or two 3-credit subjects at the 30-level (excluding Special Projects) <p><i>NOTE: Although not required for admission, it is strongly suggested that students entering Education possess Math 30-1 or Math 30-2.</i></p>	<ul style="list-style-type: none"> • ELA A30 & B30 (min. 60%) • Three 30-level academic subjects • One 30-level subject (excluding Special Projects) <p><i>NOTE: Although not required for admission, it is strongly suggested that students entering Education possess Pre-Calculus 30 or Foundations of Math 30.</i></p>	<ul style="list-style-type: none"> • ELA 30-1 (min. 60%) • Pre-requisite courses required, e.g. Chem 30 required for university level Chemistry <p><i>NOTE: Although not required for admission, it is strongly suggested that students entering Education possess Math 30-1 or Math 30-2.</i></p>	<p>Professional opportunities may include teacher, educational administrator or policy maker.</p>
FINE ARTS	<ul style="list-style-type: none"> • ELA 30-1 • Three 30-level academic subjects • One 30-level, 5 credit subject (excluding Special Projects) 	<ul style="list-style-type: none"> • ELA A30 & B30 • Three 30-level academic subjects • One 30-level subject (excluding Special Projects) 	<ul style="list-style-type: none"> • ELA 30-1 • One 30-level academic subject 	<p>Career opportunities may include artist, entrepreneur, printmaker, photographer, curatorial assistant, public relations (museum, art gallery), exhibit designer, archivist registrar (museum), art therapist, or art agent/consultant.</p>
KINESIOLOGY	<ul style="list-style-type: none"> • ELA 30-1 • Math 30-1 • Biology 30 • Chemistry 30 • One 30-level, 5 credit subject (excluding Special Projects) <p><i>NOTE: Students should be aware that some universities require Physics 30</i></p>	<ul style="list-style-type: none"> • ELA A30 & B30 • Pre-Calculus 30 • Biology 30 • Chemistry 30 • One 30-level subject (excluding Special Projects) <p><i>NOTE: Students should be aware that some universities require Physics 30</i></p>	<ul style="list-style-type: none"> • ELA 30-1 • Math 30-1 • Biology 30 • Chemistry 30 <p><i>NOTE: Students should be aware that some universities require Physics 30</i></p>	<p>Possible careers include coach, exercise physiologist, athletic therapist, fitness specialist, consultant, researcher, adaptive physical activity specialist, athletic director, recreation coordinator, registered kinesiologists.</p>
PRE-PROFESSIONAL PROGRAMS <ul style="list-style-type: none"> • PRE-DENTAL HYGIENE • PRE-DENTISTRY • PRE-MEDICAL LABORATORY SCIENCE • PRE-MEDICINE • PRE-NUTRITION • PRE-PHARMACY • PRE-VETERINARY 	<p>Refer to University Studies Science below for admission requirements.</p> <p><i>Students will apply to University Studies: Science.</i></p>	<p>Refer to University Studies Science below for admission requirements.</p> <p><i>Students will apply to University Studies: Science.</i></p>	<p>Refer to University Studies Science below for admission requirements.</p> <p><i>Students will apply to University Studies: Science.</i></p>	
SCIENCE VARIETY OF MAJORS	<ul style="list-style-type: none"> • ELA 30-1 • Math 30-1 • Any two of Biology 30, Chemistry 30 or Physics 30 <p><i>NOTE: Students should be aware that different majors will require different combinations of Science courses.</i></p>	<ul style="list-style-type: none"> • ELA A30 & B30 • Pre-Calculus 30 • Any two of Biology 30, Chemistry 30 or Physics 30 <p><i>NOTE: Students should be aware that different majors will require different combinations of Science courses.</i></p>	<ul style="list-style-type: none"> • ELA 30-1 • Math 30-1 • Any two of Biology 30, Chemistry 30 or Physics 30 <p><i>NOTE: Students should be aware that different majors will require different combinations of Science courses.</i></p>	<p>Career choices vary depending on which science major or professional degree is selected.</p>
SOCIAL WORK	<ul style="list-style-type: none"> • ELA 30-1 • Math 30-1 or Math 30-2 or a 30-level second language • Two 30-level academic subjects • One 30-level, 5 credit subject (excluding Special Projects) <p><i>Note: Some universities require Social 30-1 or Aboriginal Studies 30.</i></p>	<ul style="list-style-type: none"> • ELA A30 & B30 • Pre-Calculus 30 or Foundations of Math 30 or a 30-level second language • Two 30-level academic subjects • One 30-level subject (excluding Special Projects) <p><i>Note: Some universities require Social Studies 30, History 30 or Native Studies 30.</i></p>	<ul style="list-style-type: none"> • ELA 30-1 • One 30-level academic subject <p><i>Note: Some universities require Social 30-1 or Aboriginal Studies 30.</i></p>	<p>Graduates may find employment opportunities with government departments, school boards, hospitals and continuing care organizations, mental health clinics, family and social service agencies, correctional services and agencies or non-profit community agencies.</p>

NOTE: Mandatory courses require a minimum average of 60% for admission with no individual mark below 50% for admission into university studies programs.

*FOR OTHER PROVINCIAL EQUIVALENCIES AND A LIST OF ACADEMIC SUBJECTS, SEE PAGE 31.

APPRENTICESHIP

3-4 year programs

PROGRAM	LENGTH	ALBERTA ENTRANCE REQUIREMENTS	SASKATCHEWAN ENTRANCE REQUIREMENTS	MATURE ENTRANCE REQUIREMENTS (AGE 21 OR OLDER)
CARPENTER	4 YEARS	<ul style="list-style-type: none"> English 10-2 Math 10-3 	<ul style="list-style-type: none"> Grade 10 English Grade 10 Math 	<ul style="list-style-type: none"> English 10-2 Math 10-3
WELDER	3 YEARS	<ul style="list-style-type: none"> OR pass all five Canadian GED tests OR Entrance Exam 	<ul style="list-style-type: none"> OR pass all five Canadian GED tests OR Entrance Exam 	<ul style="list-style-type: none"> OR pass all five Canadian GED tests OR Entrance Exam
AUTOMOTIVE SERVICE TECHNICIAN	4 YEARS	<ul style="list-style-type: none"> English 20-2 Math 20-3 Science 10 	<ul style="list-style-type: none"> Grade 11 English Grade 11 Math Grade 10 Science 	<ul style="list-style-type: none"> English 20-2 Math 20-3 Science 10
ELECTRICIAN	4 YEARS	<ul style="list-style-type: none"> OR pass all five Canadian GED tests OR Entrance Exam 	<ul style="list-style-type: none"> OR pass all five Canadian GED tests OR Entrance Exam 	<ul style="list-style-type: none"> OR pass all five Canadian GED tests OR Entrance Exam
HEAVY EQUIPMENT TECHNICIAN	4 YEARS	<ul style="list-style-type: none"> OR Entrance Exam 	<ul style="list-style-type: none"> OR Entrance Exam 	<ul style="list-style-type: none"> OR Entrance Exam
PLUMBER	4 YEARS			
STEAMFITTER-PIPEFITTER	4 YEARS			

Admissions are done through Alberta Apprenticeship and Industry Training.

MEDICINE HAT COLLEGE TRADES
403.529.3975

HOW DO I START AN APPRENTICESHIP?

- **STEP 1**
Find an employer willing to hire you as an apprentice.
- **STEP 2**
Register as an apprentice.
- **STEP 3**
Begin working and log your hours.
- **STEP 4**
Attend technical training.



For more information, visit tradesecrets.alberta.ca.



* COMPETITIVE ENTRANCE

Please note that some programs at Medicine Hat College follow a competitive admission process. This means that we receive more applications than there is space in the program and will admit students who possess the highest grades in the courses required for admission to that program. The minimum grade requirements listed for admission are rarely sufficient for a successful application.

The competitive admission average cannot be determined in advance as it depends on the grades achieved by others who are also applying to the same program. Students who are interested in a competitive program are encouraged to apply as early as possible. All applicants to competitive programs will have an admission decision no later than June 1 for Fall admission.

ACADEMIC SUBJECTS

ALBERTA:

- Aboriginal Studies 30
- Biology 30
- Chemistry 30
- Mathematics 30-1 or 30-2
- Mathematics 31
- Physics 30
- Science 30
- Social Studies 30-1
- One or more distinct 30-level language(s) (ex. French 30)
- 5 credits in advanced level CTS Computer Science (CSE)

One of:

- Art 30 or Art 31
- Choral Music 30
- Dance 35
- Drama 30
- General Music 30
- Instrumental Music 30

SASKATCHEWAN:

- Biology 30
- Calculus 30
- Chemistry 30
- Computer Science 30
- Earth Science 30
- Francais Fransaskois A30 or B30
- Geography 30
- History 30
- Pre-Calculus 30 or Foundations of Math 30
- Native Studies 30
- Physics 30
- Social Studies 30
- One or more distinct 30-level language(s) (ex. French 30)

One of:

- Law 30
- Psychology 30

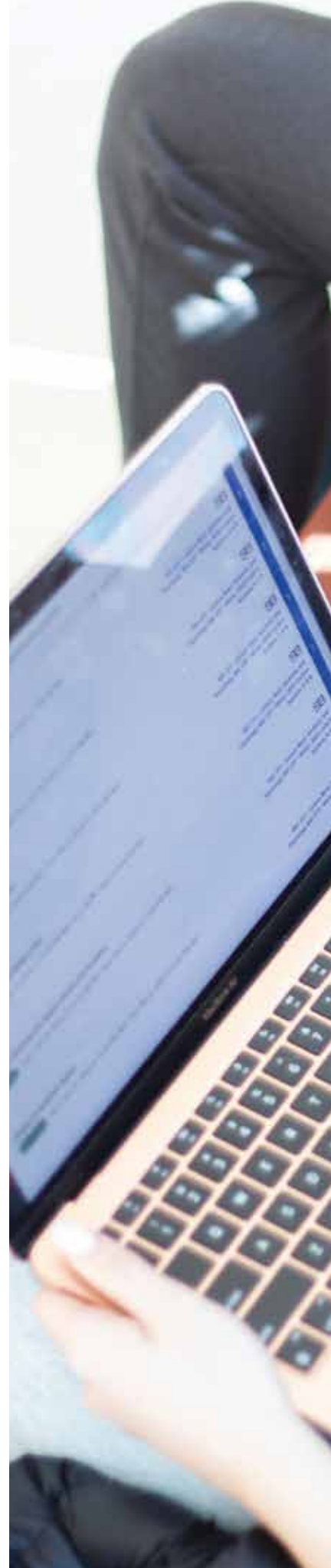
One of:

- Arts Education 30
- Band 30
- Choral 30
- Dance 30
- Drama 30
- Instrumental Jazz 30
- Visual Art 30

OTHER PROVINCES:

If you are from outside of Alberta or Saskatchewan, please view other provincial high school equivalencies for various subjects by going to www.mhc.ab.ca/admission.

Questions? Contact the Advising office at 403.529.3819.



Visit



OPEN HOUSE

Want to experience MHC and learn more about our programs? MHC will host an Open House at the Medicine Hat Campus on **November 8, 2023**, and at the Brooks Campus on **November 2, 2023**. Check out the campus, learn more about our programs and connect with your future instructors. We'll support you through the application process so you finish the day one step closer to becoming an MHC student!

BOOK A CAMPUS TOUR

Medicine Hat College offers campus tours to prospective students. This is a great opportunity to see our amazing facilities first-hand, and even view our student residence when available.

To book a campus tour, call **403.529.3819**.



How to apply

To apply or request more information, go to www.mhc.ab.ca/admission.



   
[WWW.MHC.AB.CA](http://www.mhc.ab.ca)

MEDICINE HAT CAMPUS:
299 COLLEGE DR. SE
MEDICINE HAT, AB / T1A 3Y6

BROOKS CAMPUS:
200 HORTICULTURAL STATION RD E
BROOKS, AB / T1R 1E5

