



MEDICINE HAT
COLLEGE



CELEBRATING
60 YEARS

Your path.
Your way.
VIEWBOOK 2026-2027



OKI [OH-KEE] BLACKFOOT

TÂN'SI [TAHN-SEH] CREE

TAANSHI [TAWN-SHI] MICHIF

ÂBA WATHTECH [AH-BAH WAH-TAYCH] STONEY NAKODA

DANIT'ADA [DAN-IT-AH-DAH] TSUJUT'INA

HELLO

Medicine Hat College acknowledges and honours the traditional territories of the First Nation People of Treaty 7 and Treaty 4, and of the Métis people who share a deep history with this land. We recognize and honour the land, history, ways of being, and our relationship with First Nation, Métis, and Inuit people as we forge together towards a relationship of reconciliation, respect, understanding, and healing.

Medicine Hat Fun Facts

 **2,512** HOURS OF SUNSHINE
PER YEAR

14
SUMMER
FESTIVALS

3
LOCAL
BREWERIES

190+ KM OF TRAILS



**HISTORIC
DOWNTOWN**



**SUNSHINE
TROLLEY
TOURS**

Content

- 2 GET STARTED**
Explore, apply, register
- 4 MEET YOUR MATCH**
Match your interests to our programs
- 6 LOVE TO LEARN**
Connect with hands-on and personal classroom experiences
- 8 SUPPORT TO THRIVE**
Learn about academic support, mental health services, financial aid, and more
- 11 WHERE YOU BELONG**
Build a sense of community and connect with campus life
- 12 CONNECT TO CULTURE**
Engage with Indigenous teaching and learning in Ómahksipiitaa
- 14 LIVE HERE**
Your home away from home
- 16 COMMUNITY EXPERIENCE**
Explore what Southeast Alberta has to offer
- 20 GET READY TO PLAY**
Join Rattlers Athletics
- 22 EXPLORE PATHWAYS**
Review admission requirements for all college programs
- 36 APPLY TO MHC**

Not sure where to begin? Explore interests and programs at www.mhc.ab.ca/careercoach.

Your quick guide:

GETTING STARTED AT MHC

1 VISIT

Campus Tours & Student for a Day

Get a feel for campus! Book a tour or register as a Student for a Day by calling **403.504.2283** or emailing info@mhc.ab.ca.

Medicine Hat Campus Open House

November 12, 2025

Brooks Campus Open House

November 5, 2025

2 APPLY

Apply to the program of your choice at applyalberta.ca or visit us at an Open House!

Application processing begins **October 1, 2025** for the 2026/2027 academic year.

Don't forget to apply for residence if you plan to live on campus.

3 ACCEPT

Check your email! A letter of acceptance will be emailed to you if your application is successful. Once you receive the letter of acceptance, you must confirm your seat by paying the deposit.

Visit www.mhc.ab.ca/apply for details.

4 FUND

Student loan applications open in June. Apply early to avoid delays. To apply, please visit www.studentaid.alberta.ca.

Scholarship and bursary applications are accepted from **March 1 - June 1, 2026**. Apply for scholarships and bursaries at www.mhc.ab.ca/awards.

Questions? Contact our Financial Aid office: finaidinfo@mhc.ab.ca.

5 REGISTER

It's important to register early to ensure you get the classes you need, when you need them. Class registration opens **May 5, 2026** for the 2026/2027 academic year.

Questions? Contact our Registration office: registration@mhc.ab.ca.

6 START

Be sure to attend the following events for a smooth transition into college life!

New Student Orientation

FALL: September 1, 2026

WINTER: January 4, 2027

Dive into your college experience and learn what to expect during your time at MHC.

Can't wait to see our campus?
Click the QR code to take a virtual tour.

DATES AT A GLANCE

OCTOBER 2025 Applications Open	MAY 2026 Class Registrations Open	SEPTEMBER 2026 New Student Orientation
NOVEMBER 2025 Open House	JUNE 2026 Student Loan Applications Open Winter Intake Applications Open	JANUARY 2027 Winter New Student Orientation
MARCH 2026 Scholarship Applications Open		

Meet your match

DISCOVER YOUR PASSION

Whether you are attending high school or thinking about a career change, you can benefit from connecting your personality, interests and values to educational opportunities.

The following is based on Holland's Theory of Career Choice which uses six personality types to measure an individual's characteristics and match them with careers. The theory assumes that when your natural characteristics are the same as your work environment needs, your satisfaction at work is greater.

Select 1-3 types that describe you best and match the colour of those types to the corresponding MHC programs. Remember, career planning is not a one-time activity, but a series of decisions made over your lifetime.

The Doers - Realistic people are interested in spending time outdoors, using tools to solve problems, and working on projects with concrete results. Realistic people tend to use common sense to solve problems and appreciate work environments that are organized and structured where they can fix, build, or repair things. Realistic people value tradition, practicality, and common sense.

The Thinkers - Investigative people are interested in solving problems through thinking using science, mathematics, writing, and research. Investigative people enjoy learning new facts and theories, researching, analyzing, and interpreting information. Investigative people value independence, curiosity, and learning.

The Creators - Artistic people are interested in self-expression, communication, culture, and unstructured creative activities. Artistic people enjoy using their imagination while observing and participating in a variety of artistic pursuits including visual, performing, and culinary arts as well as writing. Artistic people value beauty, originality, and independence.

The Helpers - Social people are interested in people, teamwork, helping, and community service. Motivated by helping and empowering others, Social people enjoy explaining, guiding, and using their insights to solve problems in collaborative and supportive environments. Social people value communication, cooperation, generosity, and service to others.

The Persuaders - Enterprising people are interested in leadership, business, and politics. Motivated by persuading and selling, Enterprising people enjoy managing projects and working with others and leading people towards goals and economic success. Enterprising people value competition, influence, status, and risk taking.

The Organizers - Conventional people are interested in organization, order, detail, and accuracy. Practical and precise, Conventional people prefer working in structured and predictable environments. Conventional people use information to solve problems efficiently. Conventional people value accuracy, stability, and efficiency.

Looking for more career resources? Visit www.mhc.ab.ca/careercoach.



Alumni Voice

PRESTON SLOAN
University Transfer: Kinesiology
OTA/PTA Instructor

"My biggest advice to students is to talk with professionals in the fields they might be interested in and job shadow to learn if they're comfortable doing the work."

■ Dominant Characteristic
● Secondary Characteristic

PROGRAMS

- ● ● Addictions Counselling DIPLOMA
- ● ● Administrative Office Management DIPLOMA
- ● ● Administrative Office Professional CERTIFICATE
- ● ● Advanced Accounting POST-DIPLOMA CERTIFICATE
- ● ● Art and Design BACHELOR OF APPLIED ARTS
- ● ● Arts UNIVERSITY TRANSFER
- ● ● Automotive Service Technician APPRENTICESHIP
- ● ● Aviation Management CERTIFICATE
- ● ● Built Environment Engineering Technology (BEET) DIPLOMA
- ● ● Business Administration DIPLOMA
- ● ● Carpenter APPRENTICESHIP
- ● ● Child and Youth Care Counsellor DIPLOMA
- ● ● Commerce/Management UNIVERSITY TRANSFER
- ● ● Computer Aided Drafting and Design (CADD) CERTIFICATE
- ● ● Criminal Justice DIPLOMA
- ● ● Early Learning and Child Care CERTIFICATE/DIPLOMA
- ● ● Education BACHELOR OF/ UNIVERSITY TRANSFER
- ● ● Electrician APPRENTICESHIP
- ● ● Environmental Biology & Reclamation Technology DIPLOMA
- ● ● Health Care Aide CERTIFICATE
- ● ● Heavy Equipment Technician APPRENTICESHIP
- ● ● Humanities & Social Sciences DIPLOMA
- ● ● Information Technology CERTIFICATE/DIPLOMA
- ● ● Intermediate Accounting POST-DIPLOMA CERTIFICATE
- ● ● Kinesiology DIPLOMA/ UNIVERSITY TRANSFER
- ● ● Marketing & Design POST-DIPLOMA CERTIFICATE
- ● ● Nursing BACHELOR OF SCIENCE
- ● ● Occupational/Physical Therapist Assistant (OTA/PTA) DIPLOMA
- ● ● Paramedic BACHELOR OF APPLIED HEALTH SCIENCE
- ● ● Pharmacy Technician DIPLOMA
- ● ● Plumber/Gasfitter APPRENTICESHIP
- ● ● Power Engineering Technology DIPLOMA
- ● ● Practical Nurse DIPLOMA
- ● ● Pre-Professional Programs (dentist, dental hygiene, medicine, pharmacy, vet) UNIVERSITY TRANSFER
- ● ● Science UNIVERSITY TRANSFER
- ● ● Service Dog and Canine Studies Management DIPLOMA
- ● ● Social Work DIPLOMA/UNIVERSITY TRANSFER
- ● ● Speech Language Pathologist Assistant DIPLOMA
- ● ● Sport & Event Marketing and Management DIPLOMA
- ● ● Steamfitter/Pipefitter APPRENTICESHIP
- ● ● Sustainable Energy Systems Professional CERTIFICATE
- ● ● Sustainable Innovation DIPLOMA
- ● ● Welder APPRENTICESHIP

For more detailed information on Medicine Hat College programs, refer to page 22 or visit www.mhc.ab.ca/programs.

Love to learn



HANDS-ON. PERSONAL. CONNECTED.

Learning at MHC is all about providing rich experiences that support your chosen path. Whether that path starts and ends here or leads you down new roads, we have the certificate, diploma, degree, apprenticeship and university transfer programs that can get you where you want to go.

WORK INTEGRATED LEARNING

Work Integrated Learning (WIL) is all about taking lessons learned in the classroom and applying them to real world experiences. Through hands-on learning and opportunities to create relationships with employers and community partners, you are able to build valuable skills, knowledge and connections that support your success.

From practicums and clinical placements to internships and co-ops, WIL is available in many MHC programs. **Ask about WIL opportunities available in your program(s) of interest!**

APPLIED RESEARCH

Build valuable skills and relationships beyond the classroom! MHC's Centre for Innovation connects researchers, faculty, students, and industry partners to work collaboratively on solutions that matter to our region.



→
PROJECT HIGHLIGHT
Art & Design



←
PROJECT HIGHLIGHT
*Built Environment
Engineering
Technology*



→
PROJECT HIGHLIGHT
Paramedic



←
PROJECT HIGHLIGHT
Education

Support
to
thrive

MHC STUDENTS RECEIVED
ALMOST \$1 MILLION IN
SCHOLARSHIPS, BURSARIES AND
OTHER AWARDS IN 2024/25



SEE THE WORLD EDUCATION ABROAD

MHC's international activity is guided by the philosophy that education and learning is greatly enhanced by an understanding of different cultures, languages, and peoples.

Education Abroad programs provide students with opportunities to develop the skills and attitudes required to function successfully in an interconnected global society, world, and economy. Choose from semester or summer exchange programs or participate in virtual exchange activities.

SUPPORT FOR LEARNING AND STUDENT LIFE

We're here to help! Find the supports and services you need to be successful at MHC with everything from academic advising, coaching and financial aid to accessibility services, tutoring and so much more.

But it's not just about classrooms and coursework. We know that with college comes new experiences, new expectations and new challenges. For the times when you need to talk things through, we're here with free counselling and mental health programs, spiritual services, and peer support to help you balance your life in and outside of school.

DON'T WORRY, YOU'VE GOT THIS.

For a full list of supports and services, visit www.mhc.ab.ca/studentlife.

FINANCIAL AID

Learn how you can fund your education! Our Student Financial Aid team can help you understand the student loan process and provide access to financial award opportunities.

Applying for awards is quick and easy! For more info, visit www.mhc.ab.ca/awards or email finaidinfo@mhc.ab.ca. Award applications are accepted from **March 1 – June 1**.

TUITION AND FEES CALCULATOR

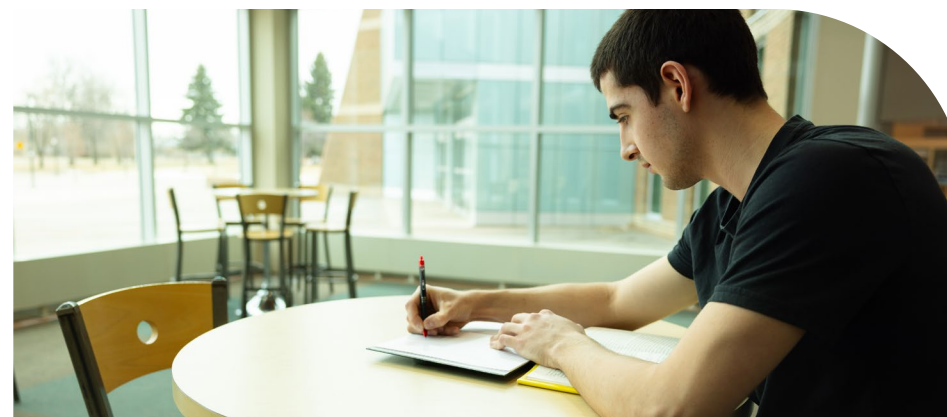
For more detailed information on first year program costs, check out our new tuition and fees calculator.



WELLNESS

State-of-the-art equipment and bright open spaces will move your workout to the next level in MHC's new Fitness Centre! You can also take advantage of **free** Fitness Centre access and group classes throughout the fall and winter semesters, plus enjoy beautiful outdoor spaces and trails year round.

Studying at Brooks Campus?
Fitness facilities are available on site.





Want to get in on the fun?
Join the MHC Promo Team!



Where you belong

CAMPUS COMMUNITY

MHC is a close knit community that offers a variety of ways to connect and engage. From student governance and clubs to the ambassador program, there are many opportunities to be involved and make the most of your college experience!

The **Students' Association at Medicine Hat College (SAMHC)** is your connection to campus life. SAMHC serves as a voice for all students and plans special events that celebrate diversity, create awareness, and engage the college community. Interested in joining or starting a student club? Have questions about academic processes, or require health and dental benefits? Maybe you just want to meet people and have fun. Whatever you're looking for, SAMHC is a good place to start! Visit samhc.ca for details.

The **ambassador program** is a great way for you to share your passion for MHC and maximize your student experience! Volunteer for events, gain valuable skills and make new friends as a student ambassador. Visit www.mhc.ab.ca/ambassadors for more info.



ÓMAHKSÍPIITAA
BIG EAGLE

Connect *to culture*

Medicine Hat College is honoured to share the name Ómahksípiitaa, which means Big Eagle.

The name was gifted to MHC by Blackfoot Elders at the grand opening of Co-op Wellness Commons in 2022. At the heart of this facility is a unique gathering space – Ómahksípiitaa – which has become a hub for Indigenous teaching and learning for our college and community.

MHC's Indigenous Engagement & Student Supports office, located across from Ómahksípiitaa, provides a safe and supportive environment for Indigenous students and connects them to resources like financial aid and wellness. It also assists with the education and integration of Indigenous culture on campus by hosting guest speakers, workshops, crafting circles and other special events that increase awareness and understanding of Indigenous issues, traditions, and history.

LEARN MORE ABOUT INDIGENOUS
ENGAGEMENT & STUDENT
SUPPORTS AT MHC.



INDIGENOUS GRAD CEREMONY



ANNUAL ROUND DANCE
MARCH 14, 2026



VISIT OUR WEBSITE FOR A
COMPLETE LIST OF INDIGENOUS
EVENTS AND ACTIVITIES.



16
CRAFT CIRCLES

Live here



YOUR HOME AWAY FROM HOME

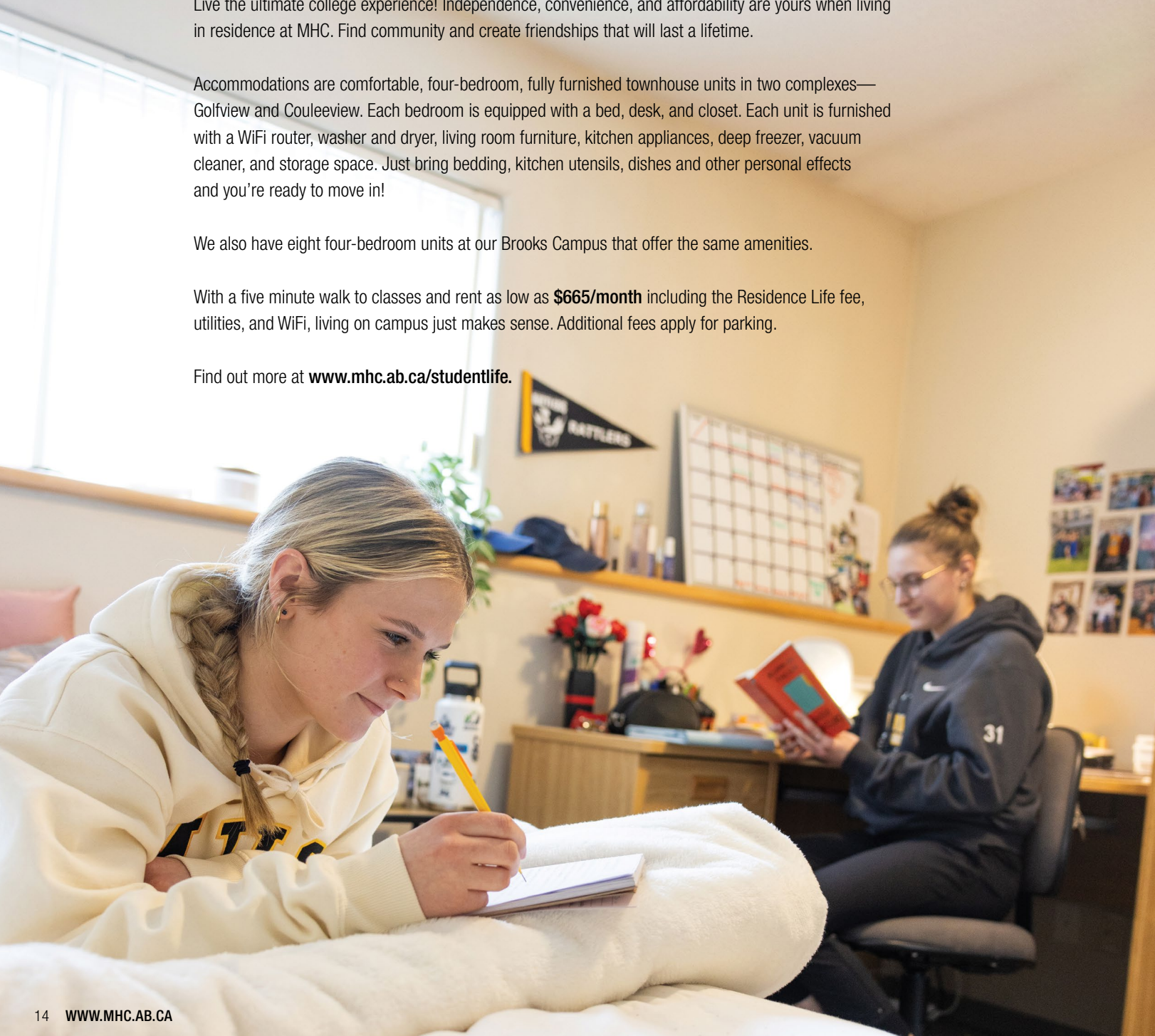
Live the ultimate college experience! Independence, convenience, and affordability are yours when living in residence at MHC. Find community and create friendships that will last a lifetime.

Accommodations are comfortable, four-bedroom, fully furnished townhouse units in two complexes—Golfview and Couleeview. Each bedroom is equipped with a bed, desk, and closet. Each unit is furnished with a WiFi router, washer and dryer, living room furniture, kitchen appliances, deep freezer, vacuum cleaner, and storage space. Just bring bedding, kitchen utensils, dishes and other personal effects and you're ready to move in!

We also have eight four-bedroom units at our Brooks Campus that offer the same amenities.

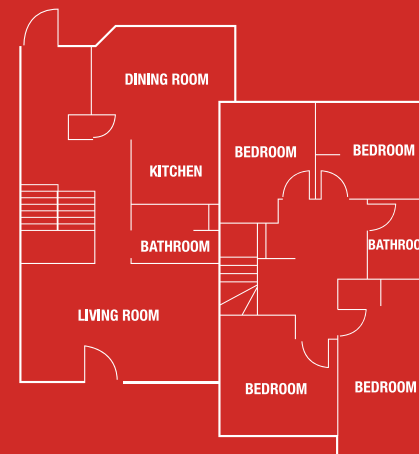
With a five minute walk to classes and rent as low as **\$665/month** including the Residence Life fee, utilities, and WiFi, living on campus just makes sense. Additional fees apply for parking.

Find out more at www.mhc.ab.ca/studentlife.



GOLFVIEW

4 bedrooms | 2 bathrooms



GOLFVIEW RESIDENCE
VIRTUAL TOUR



300

STUDENTS LIVE
IN RESIDENCE



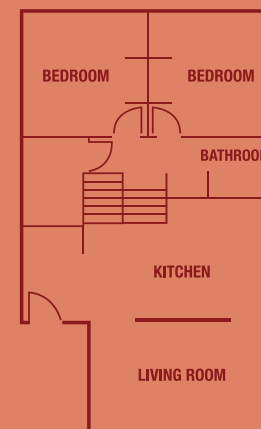
5 MIN WALK
TO CLASS

? DID YOU KNOW

RESIDENCE ASSISTANTS LIVE ON SITE AND PROVIDE SUPPORT AND SECURITY FOR STUDENTS IN OUR RESIDENCE COMMUNITIES.

COULEEVIEW

4 bedrooms | 2 bathrooms



COULEEVIEW RESIDENCE
VIRTUAL TOUR



Community experience

MEDICINE HAT

tourismmedicinehat.com

Whether you already call Medicine Hat home or are ready to make a move, this warm and welcoming community in Southeast Alberta has everything you need and more. There are endless opportunities to be active and enjoy the great outdoors with the city's extensive trail system, golf courses, and green spaces. Medicine Hat also boasts a vibrant arts and entertainment scene featuring exceptional musical talent, festivals, sporting events, and high profile shows at the Esplanade Arts & Heritage Centre, Co-op Place, and other venues around the city.

With all the amenities of a larger centre plus the advantages of living in a smaller community, like short commutes and affordable accommodations, there's lots to love about The Hat!

Located less than 300 kilometres from Calgary and 50 kilometres from the Saskatchewan border, Medicine Hat is well-positioned along the Trans-Canada Highway with easy access to the Cypress Hills and the United States.

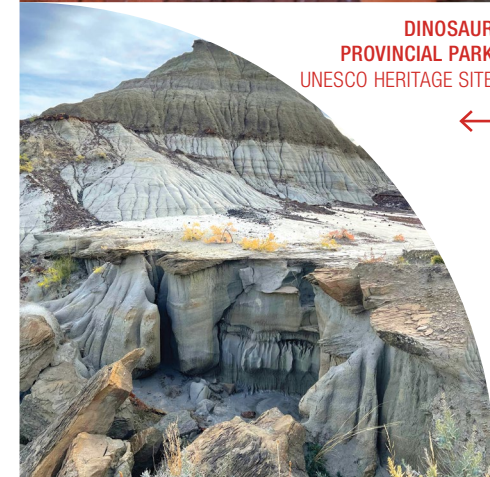
BROOKS

brooksregion.ca

Some of MHC's programming is offered at our Brooks Campus, located 100 kilometres west of Medicine Hat. Brooks is a vibrant, diverse community rich in culture and western hospitality with easy access to world-renowned attractions.



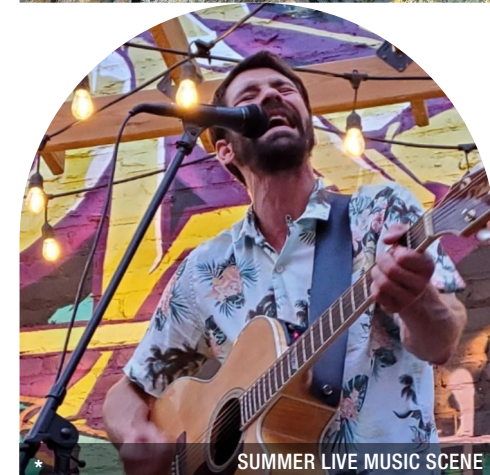
DOWNTOWN BROOKS



DINOSAUR PROVINCIAL PARK UNESCO HERITAGE SITE



* DOWNTOWN MEDICINE HAT DINING & SHOPPING



SUMMER LIVE MUSIC SCENE



* RISE UP BALLOON FESTIVAL

96%
★★★★★

OF GRADUATES WOULD
RECOMMEND MHC

*BASED ON 2025 STUDENT SATISFACTION SURVEY



1:10
FACULTY TO
STUDENT RATIO
(2023/24)



Alumni
voice



ASHLEY HERRMANN
Bachelor of Business Administration

Life's journey is rarely a straight or simple path.
Hear from people whose unique pathways through education have led them to find their passion.



16
AVERAGE # OF
STUDENTS PER CLASS
(2024/25)



21
PROGRAMS INCLUDE
WORK INTEGRATED
LEARNING
(2023/24)



84%

OF EMPLOYED GRADUATES
ARE IN THEIR FIELD OF STUDY
*BASED ON 2024 GRADUATE SURVEY



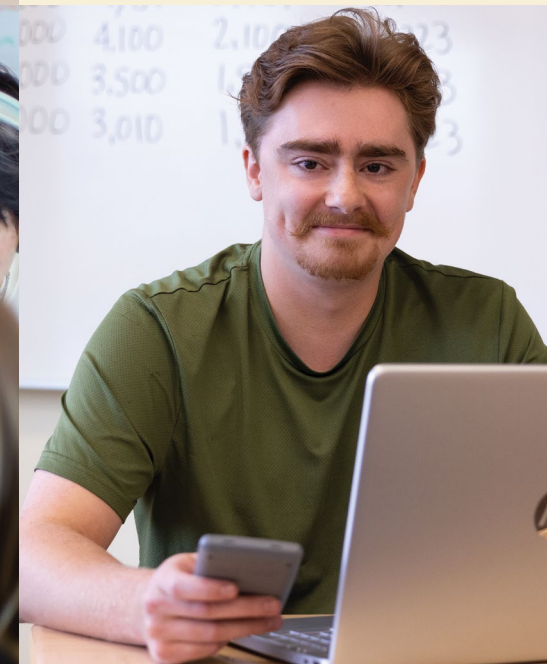
Alumni
voice

BENITA SAUER
University Transfer: Commerce

Life's journey is rarely a straight or simple path.
Hear from people whose unique pathways through education have led them to find their passion.

94%

OF STUDENTS ARE SATISFIED
WITH THE OVERALL QUALITY OF THEIR
EDUCATIONAL EXPERIENCE AT MHC
*BASED ON 2025 STUDENT SATISFACTION SURVEY





BASKETBALL
(MEN'S AND WOMEN'S)



**CROSS-COUNTRY
RUNNING/
INDOOR TRACK**
(MEN'S AND WOMEN'S)



GOLF
(MEN'S AND WOMEN'S)



SOCCER/FUTSAL
(MEN'S AND WOMEN'S)



VOLLEYBALL
(MEN'S AND WOMEN'S)



HOCKEY
(WOMEN'S)



Get ready to
play

RATTLEERS ATHLETICS

Medicine Hat College has a proud tradition of athletics, leadership and community engagement. As Southeast Alberta's team, our Rattlers athletes bring their best in basketball, cross-country running, futsal, golf, soccer, volleyball, and women's hockey and demonstrate excellence in competition and in the classroom.

The Snake Pit is the place to be on game day so gather your friends, grab your noisemaker and get Rowdy! Admission to regular season home games is **free** for MHC students.



Want to be even closer to the action? If you think you've got what it takes to be a Rattler, connect with our athletics department to learn more about recruitment opportunities.

RATTLEERS.CA

ROWDY THE RATTLER





Explore pathways

Life's journey is rarely a straight or simple path.
Hear from people whose unique pathways through education have led them to find their passion.

KRYSTAL EIRICH
Social Work Diploma

ADMISSION CHARTS

program admission requirements

It's never too early to start planning for your future. Prepare for your MHC experience today by understanding the admission process and requirements for your chosen program.

PROGRAMS OF STUDY

MHC has a variety of certificate, diploma, degree, university transfer, and apprenticeship programs to meet your needs.

CERTIFICATE

Program Length: 1 year

Certificate programs allow students to train for a specific career in a very short period of time.

DIPLOMA

Program Length: 2 years

Diploma programs prepare students for careers or further study.

APPLIED DEGREE

Program Length: 3 years

Applied degrees combine academic education with practical, on-the-job training.

DEGREE

Program Length: 4 years

Degree programs are offered on campus in partnership with other Alberta universities, allowing students to complete a full degree in Medicine Hat.

UNIVERSITY TRANSFER

Program Length: 1-2 years

University Transfer allows students to start their degree at MHC by building an individualized program that supports their transfer to a university.

APPRENTICESHIP

Program Length: 3-4 years

Apprenticeship is a combination of on-the-job and technical training that leads to certification as a journey person and a post-secondary credential.

MORE WAYS TO LEARN

Flex

FLEXIBLE LEARNING

This program is offered in a flexible modality. This means students can choose to attend class in-person or online asynchronously. The asynchronous option will be a recording on Blackboard of the in-person class and will be released according to the course outline schedule. Assessments, projects, or residency requirements will ONLY be offered in-person and at designated times, unless specified otherwise by the instructor.

EXTENDED LEARNING

Whether you're looking to advance your career, develop new skills, or learn about emerging industries and technologies, Extended Learning provides courses when, where, and how you need them.


For more information, scan the QR code or visit www.mhc.ab.ca/extendedlearning.

Explore your career options, visit www.mhc.ab.ca/careercoach.

CERTIFICATES & DIPLOMAS

1-2 year programs

Unless otherwise stated, a minimum grade of 50% is required for all subjects.

PROGRAM	LENGTH	ALBERTA ADMISSION REQUIREMENTS	SASKATCHEWAN ADMISSION REQUIREMENTS	MATURE ADMISSION REQUIREMENTS (AGE 21 OR OLDER)	CAREER OPPORTUNITIES
ADDICTIONS COUNSELLING DIPLOMA <i>NEW</i>	2 YEARS	ELA 30-1 (min 50%) or ELA 30-2 (Min 65%) OR Successful completion of the CAEC with a standard score of 520 in Language Arts: Reading and Writing.	ELA 30 (min 50%) OR Successful completion of the CAEC with a standard score of 520 in Language Arts: Reading and Writing.	ELA 30-1 (min 50%) or ELA 30-2 (Min 65%) OR Successful completion of the CAEC with a standard score of 520 in Language Arts: Reading and Writing.	Addictions Counselling Diploma graduates work in non-profit and private agencies, including community-based organizations, schools, addiction services, residential settings, senior care facilities, and government organizations.
<i>Flex</i> ADMINISTRATIVE OFFICE PROFESSIONAL CERTIFICATE	1 YEAR	<ul style="list-style-type: none"> • ELA 30-1 or ELA 30-2 • Math 10C 	<ul style="list-style-type: none"> • ELA 30 • Foundations of Math and Pre-Calculus 10 	<ul style="list-style-type: none"> • ELA 30-1 or ELA 30-2 • Math 10C 	Graduates of the Administrative Office Professional program are prepared for entry level positions in a variety of office environments including accounting, education, and agriculture.
ADMINISTRATIVE OFFICE MANAGEMENT DIPLOMA	2 YEARS				The Administrative Office Management program develops an enhanced skill-set to increase potential for obtaining a supervisory or managerial position in an office environment.
<i>Flex</i> ADVANCED ACCOUNTING POST-DIPLOMA CERTIFICATE	1 YEAR	Graduation from a Business Administration diploma in Accounting or equivalent at an accredited post-secondary institution with completion of the following courses (or their equivalents) with a grade of C (60%) or higher: <ul style="list-style-type: none"> • ACCT 113, 213, & 215 • MGMT 243, 263, 284, & 285 • MKTG 171 • FINA 255 	Graduation from a Business Administration diploma in Accounting or equivalent at an accredited post-secondary institution with completion of the following courses (or their equivalents) with a grade of C (60%) or higher: <ul style="list-style-type: none"> • ACCT 113, 213, & 215 • MGMT 243, 263, 284, & 285 • MKTG 171 • FINA 255 	Graduation from a Business Administration diploma in Accounting or equivalent at an accredited post-secondary institution with completion of the following courses (or their equivalents) with a grade of C (60%) or higher: <ul style="list-style-type: none"> • ACCT 113, 213, & 215 • MGMT 243, 263, 284, & 285 • MKTG 171 • FINA 255 	Career opportunities for graduates may include accounting technician, accounts payable or accounts receivable clerk, bookkeeper, or CPA trainee.
AVIATION MANAGEMENT CERTIFICATE Refer to Super T Aviation for additional requirements for Integrated Flight Training	2 YEARS	High school diploma with: <ul style="list-style-type: none"> • ELA 30-1 or ELA 30-2 • Math 30-1 or Math 30-2 • Science 30 or Physics 20 Enrolment in the Super T Aviation Integrated Airline License Program	High school diploma with: <ul style="list-style-type: none"> • ELA 30 • Pre-Calculus 30 or Foundations of Math 30 • Earth Science 30 or Physical Science 20 Enrolment in the Super T Aviation Integrated Airline License Program	<ul style="list-style-type: none"> • ELA 30-1 or ELA 30-2 • Math 30-1 or Math 30-2 • Science 30 or Physics 20 Enrolment in the Super T Aviation Integrated Airline License Program	Aviation Management graduates who also complete flight training may find employment as a flight instructor, Medevac pilot, charter pilot, or commuter pilot for smaller airlines.
<i>Flex</i> BUILT ENVIRONMENT ENGINEERING TECHNOLOGY (BEET) DIPLOMA	2 YEARS	High school diploma with: <ul style="list-style-type: none"> • ELA 30-1 or ELA 30-2 • Math 30-1 or Math 30-2 • Physics 20 	High school diploma with: <ul style="list-style-type: none"> • ELA 30 • Pre-Calculus 30 or Foundations of Math 30 • Physical Science 20 	<ul style="list-style-type: none"> • ELA 30-1 or ELA 30-2 • Math 30-1 or Math 30-2 • Physics 20 	Career opportunities may be found working with consulting engineers, architects and land surveyors in a variety of industries and sectors including oil and gas, mining and manufacturing, product and equipment design and manufacturing, and all levels of government. 
BUSINESS ADMINISTRATION DIPLOMA	2 YEARS	<ul style="list-style-type: none"> • ELA 30-1 or ELA 30-2 • Math 30-1 or Math 30-2 • Two 30-level, 5-credit subjects 	<ul style="list-style-type: none"> • ELA 30 • Pre-Calculus 30 or Foundations of Math 30 • Two 30-level subjects 	<ul style="list-style-type: none"> • ELA 30-1 or ELA 30-2 • Math 30-1 or Math 30-2 	<p>Accounting Major: Graduates are prepared to find work as an accounting technician, accounts payable or accounts receivable clerk, bookkeeper, or CPA trainee.</p> <p>Financial Services Major: Graduates are prepared for financial advisor, credit officer, or loans officer positions.</p> <p>Management Major: Employment may be found as an office manager or project coordinator.</p> <p>Marketing Major: Possible career opportunities may include promotions coordinator, public relations assistant, or event marketing representative.</p>
CHILD & YOUTH CARE COUNSELLOR DIPLOMA	2 YEARS	<ul style="list-style-type: none"> • ELA 30-1 (min. 60%) or ELA 30-2 (min. 70%) • One 30-level academic subject (min. 60%) • Three 30-level, 5-credit subjects (min. 60%), with a maximum of 5-credits of CTS courses 	<ul style="list-style-type: none"> • ELA 30 (min. 60%) • One 30-level academic subject (min. 60%) • Three 30-level subjects (min. 60%) 	<ul style="list-style-type: none"> • ELA 30-1 (min. 60%) or ELA 30-2 (min. 70%) • One 30-level academic subject 	Job opportunities may be found in group homes, residential treatment centres, institutional or young offender settings, and mental health centres facilitating a variety of activity including outreach/street programs, family and community based programs, therapeutic foster care, or day treatment programs.
<i>Flex</i> COMPUTER AIDED DRAFTING & DESIGN CERTIFICATE	1 YEAR	High school diploma with: <ul style="list-style-type: none"> • ELA 30-1 or ELA 30-2 • Math 30-1 or Math 30-2 • Physics 20 	High school diploma with: <ul style="list-style-type: none"> • ELA 30 • Pre-Calculus 30 or Foundations of Math 30 • Physical Science 20 	<ul style="list-style-type: none"> • ELA 30-1 or ELA 30-2 • Math 30-1 or Math 30-2 • Physics 20 	Career opportunities may be found working with consulting engineers, architects and land surveyors in a variety of industries and sectors including oil and gas, mining and manufacturing, product and equipment design and manufacturing, and all levels of government.
CRIMINAL JUSTICE DIPLOMA	2 YEARS	<ul style="list-style-type: none"> • ELA 30-1 (min. 60%) or ELA 30-2 (min. 65%) 	<ul style="list-style-type: none"> • ELA 30 (min. 60%) 	<ul style="list-style-type: none"> • ELA 30-1 (min. 60%) or ELA 30-2 (min. 65%) 	For graduates of the Criminal Justice program, careers may include police officer, crime analyst, private or corporate investigator, correctional/parole/probation officer, youth worker or customs officer.
EARLY LEARNING & CHILD CARE CERTIFICATE / DIPLOMA	1 YEAR 2 YEARS	High school diploma with: <ul style="list-style-type: none"> • ELA 30-1 (min. 50%) or ELA 30-2 (min. 65%) 	High school diploma with: <ul style="list-style-type: none"> • ELA 30 (min. 50%) 	<ul style="list-style-type: none"> • ELA 30-1 (min. 50%) or ELA 30-2 (min. 65%) 	Job opportunities may be found with preschools, child care centres, family day homes, out of school care, and assistants in kindergarten programs.

Program name changing to Engineering Design and Architectural Technology (EDAT), pending approval in 2026.

Click the QR code to watch the video.

Program name changing to Early Childhood Education, pending approval in 2026.

*FOR OTHER PROVINCIAL EQUIVALENCIES AND A LIST OF ACADEMIC SUBJECTS, SEE PAGE 35.

CERTIFICATES & DIPLOMAS

1-2 year programs

PROGRAM	LENGTH	ALBERTA ADMISSION REQUIREMENTS	SASKATCHEWAN ADMISSION REQUIREMENTS	MATURE ADMISSION REQUIREMENTS (AGE 21 OR OLDER)	CAREER OPPORTUNITIES
ENVIRONMENTAL BIOLOGY AND RECLAMATION TECHNOLOGY DIPLOMA	2 YEARS	High school diploma with: <ul style="list-style-type: none"> • ELA 30-1 (min. 50%) or ELA 30-2 (min. 60%) • Biology 20 (min. 55%) • Chemistry 30 (min. 55%) or Science 30 (min. 55%) • Math 30-1 (min. 55%) or Math 30-2 (min. 55%) 	High school diploma with: <ul style="list-style-type: none"> • ELA 30 (min. 50%) • Environmental Science 20 (min. 55%) or Health Science 20 (min. 55%) [Recommended Environmental Science 20] • Chemistry 30 (min. 55%) or Earth Science 30 (min. 55%) • Pre-Calculus 30 (min. 55%) or Foundations of Math 30 (min. 55%) 	<ul style="list-style-type: none"> • ELA 30-1 (min. 50%) or ELA 30-2 (min. 60%) • Biology 20 (min. 55%) • Chemistry 30 (min. 55%) or Science 30 (min. 55%) • Math 30-1 (min. 55%) or Math 30-2 (min. 55%) 	Graduates of Environmental Biology and Reclamation Technology are prepared for field-based or office-based work with private or government agencies involved with environmental monitoring, site mediation and reclamation, resource reclamation, well decommissioning, or environmental impact and audit studies.
HEALTH CARE AIDE CERTIFICATE Offered at both Medicine Hat Campus and Brooks Campus for Fall intake Available blended (online/in-person) for Winter intake	1 YEAR	One of the following (only Canadian Jurisdictions accepted): <ul style="list-style-type: none"> • ELA 20-1 or ELA 20-2 (min. 60%) or Canadian Jurisdiction equivalent • ELA 30-1 or ELA 30-2 (min. 55%) or Canadian Jurisdiction equivalent • Canadian High School Equivalency Diploma (GED/CAEC) • Score of 237 or higher on each of the Reading and Writing portions of the Next-Generation ACCUPLACER test 	One of the following (only Canadian Jurisdictions accepted): <ul style="list-style-type: none"> • ELA 20 (min. 60%) or Canadian Jurisdiction equivalent • ELA 30 (min. 55%) or Canadian Jurisdiction equivalent • Canadian High School Equivalency Diploma (GED/CAEC) • Score of 237 or higher on each of the Reading and Writing portions of the Next-Generation ACCUPLACER test 	One of the following (only Canadian Jurisdictions accepted): <ul style="list-style-type: none"> • ELA 20-1 or ELA 20-2 (min. 60%) or Canadian Jurisdiction equivalent • ELA 30-1 or ELA 30-2 (min. 55%) or Canadian Jurisdiction equivalent • Canadian High School Equivalency Diploma (GED/CAEC) • Score of 237 or higher on each of the Reading and Writing portions of the Next-Generation ACCUPLACER test 	Career opportunities for Health Care Aide graduates can be found in continuing care facilities, assisted living facilities, and community agencies and with government or private individuals.
HUMANITIES & SOCIAL SCIENCES DIPLOMA	2 YEARS	<ul style="list-style-type: none"> • ELA 30-1 • Math 30-1 or Math 30-2 or a 30-level second language • Two 30-level academic subjects • One 30-level, 5-credit subject (excluding Special Projects) 	<ul style="list-style-type: none"> • ELA 30 • Pre-Calculus 30 or Foundations of Math 30 or a 30-level second language • Two 30-level academic subjects • One 30-level subject (excluding Special Projects) 	<ul style="list-style-type: none"> • ELA 30-1 • One 30-level academic subject 	Graduates are prepared with fundamental, personal management, and team work skills that are required for the rapidly changing workplace and can be applied to a variety of career environments.
INFORMATION TECHNOLOGY CERTIFICATE / DIPLOMA Students are eligible to receive a certificate if they choose to exit the diploma program after one year.	1 YEAR 2 YEARS	<ul style="list-style-type: none"> • ELA 30-1 (min. 50%) or ELA 30-2 (min. 60%) • Math 30-1 (min. 50%) or Math 20-1 (min. 65%) or Math 30-2 (min. 65%) 	<ul style="list-style-type: none"> • ELA 30 (min. 50%) • Pre-Calculus 30 (min. 50%) or Pre-Calculus 20 (min. 65%) or Foundations of Math 30 (min. 65%) 	<ul style="list-style-type: none"> • ELA 30-1 (min. 50%) or ELA 30-2 (min. 60%) • Math 30-1 (min. 50%) or Math 20-1 (min. 65%) or Math 30-2 (min. 65%) 	Graduates may find employment in entry-level program and software development, web design and development, database development and software or computer sales and support.
INTERMEDIATE ACCOUNTING POST-DIPLOMA CERTIFICATE	1 YEAR	Graduation from a Business Administration degree, diploma or equivalent at an accredited post-secondary institution with completion of the following courses (or their equivalents): <ul style="list-style-type: none"> • ACCT 113 or ACCT 321 	Graduation from a Business Administration degree, diploma or equivalent at an accredited post-secondary institution with completion of the following courses (or their equivalents): <ul style="list-style-type: none"> • ACCT 113 or ACCT 321 	Graduation from a Business Administration degree, diploma or equivalent at an accredited post-secondary institution with completion of the following courses (or their equivalents): <ul style="list-style-type: none"> • ACCT 113 or ACCT 321 	Career opportunities may include accounting technician, accounts payable or accounts receivable clerk, bookkeeper, and CPA trainee.
KINESIOLOGY DIPLOMA	2 YEARS	An overall average of 60% with no mark below 50% in: <ul style="list-style-type: none"> • ELA 30-1 • Biology 30 • Math 30-1 or Math 30-2 • One 30-level academic subject • One 30-level grade 12 5-credit subject (excluding Special Projects) 	An overall average of 60% with no mark below 50% in: <ul style="list-style-type: none"> • ELA 30 • Biology 30 • Pre-Calculus 30 or Foundations of Math 30 • One 30-level academic subject • One 30-level subject (excluding Special Projects) 	<ul style="list-style-type: none"> • ELA 30-1 • Biology 30 • Math 30-1 or 30-2 	Completion of a Kinesiology diploma prepares graduates to work as entry-level exercise professionals in a variety of fitness, health, sports, and recreation environments. Employment opportunities may include fitness programmer, personal trainer, wellness specialist, coach or sports program supervisor. Graduates can also obtain the Certified Personal Trainer certification through the Canadian Society of Exercise Physiology.
MARKETING & DESIGN POST-DIPLOMA CERTIFICATE NEW	1 YEAR	Graduate from a diploma at an accredited Post-Secondary Institution	Graduate from a diploma at an accredited Post-Secondary Institution	Graduate from a diploma at an accredited Post-Secondary Institution	Graduates may find increased employment opportunities by enhancing their existing skills and qualifications to take on more advanced roles in marketing and communications within the rapidly changing world of business. Some of the exciting career opportunities include Search Engine Optimization Specialist, Social Media Manager, Content Marketer, or Web Designer.
OCCUPATIONAL / PHYSICAL THERAPIST ASSISTANT DIPLOMA Also offered online	2 YEARS	High school diploma with a minimum of 60% in: <ul style="list-style-type: none"> • ELA 30-1 or ELA 30-2 • Biology 30 • Math 30-1, Math 30-2 or a 30-level Science • One 30-level, 5-credit subject 	High school diploma with a minimum of 60% in: <ul style="list-style-type: none"> • ELA 30 • Biology 30 • Pre-Calculus 30, Foundations of Math 30 or a 30-level Science • One 30-level subject 	A minimum of 60% in: <ul style="list-style-type: none"> • ELA 30-1 or ELA 30-2 • Biology 30 	Graduates may find employment with health regions and hospitals, rehabilitation centres, continuing care facilities, schools, community and government health agencies, or vocational rehabilitation programs.

*FOR OTHER PROVINCIAL EQUIVALENCIES AND A LIST OF ACADEMIC SUBJECTS, SEE PAGE 35.

CERTIFICATES & DIPLOMAS

1-2 year programs

PROGRAM	LENGTH	ALBERTA ADMISSION REQUIREMENTS	SASKATCHEWAN ADMISSION REQUIREMENTS	MATURE ADMISSION REQUIREMENTS (AGE 21 OR OLDER)	CAREER OPPORTUNITIES
PHARMACY TECHNICIAN DIPLOMA <i>NEW</i>	2 YEARS	<ul style="list-style-type: none"> High school diploma, general education diploma (GED), or equivalent ELA 30-1 (min. 60%) or ELA 30-2 (min. 70%) Math 30-1 (min. 60%) or Math 30-2 (min. 60%) Biology 30 (min. 60%) Chemistry 30 (min. 60%) 	<ul style="list-style-type: none"> High school diploma, general education diploma (GED), or equivalent ELA 30 (min. 60%) Pre-Calculus 30 (min. 60%) or Foundations of Math 30 (min. 60%) Biology 30 (min. 60%) Chemistry 30 (min. 60%) 	<ul style="list-style-type: none"> High school diploma, general education diploma (GED), or equivalent ELA 30-1 (min. 60%) or ELA 30-2 (min. 70%) Math 30-1 (min. 60%) or Math 30-2 (min. 60%) Biology 30 (min. 60%) Chemistry 30 (min. 60%) 	Pharmacy Technicians work in a variety of community pharmacies, hospitals, and long-term care facilities. They can also work for health insurance companies (such as Alberta Blue Cross), pharmaceutical companies, and pharmacy suppliers.
POWER ENGINEERING TECHNOLOGY DIPLOMA	2 YEARS	<p>A minimum of 60% in each:</p> <ul style="list-style-type: none"> ELA 20-1 or ELA 20-2 Math 30-1 or Math 30-2 Physics 20 <p>Even though a high school diploma is not required for program admission, some employers may require it.</p>	<p>A minimum of 60% in each:</p> <ul style="list-style-type: none"> ELA 20 Pre-Calculus 30 or Foundations of Math 30 Physical Science 20 <p>Even though a high school diploma is not required for program admission, some employers may require it.</p>	<p>A minimum of 60% in each:</p> <ul style="list-style-type: none"> ELA 20-1 or ELA 20-2 Math 30-1 or Math 30-2 Physics 20 <p>Even though a high school diploma is not required for program admission, some employers may require it.</p>	Power Engineering Technology graduates are prepared for employment at gas plants, oil refineries, petrochemical processing plants, fertilizer production or power generating plants, and building complexes.
PRACTICAL NURSE DIPLOMA Offered at Brooks Campus for Fall intake and Medicine Hat Campus for Winter intake	2 YEARS	<ul style="list-style-type: none"> ELA 30-1 (min. 60%) or ELA 30-2 (min. 70%) Math 20-1 (min. 60%) or Math 20-2 (min. 70%) Biology 30 (min. 60%) or Bow Valley College ANAT 1101 (min. 60%) 	<ul style="list-style-type: none"> ELA 30 (min. 60%) Pre-Calculus 20 (min. 60%) or Foundations of Math 20 (min. 70%) Biology 30 (min. 60%) or Bow Valley College ANAT 1101 (min. 60%) 	<ul style="list-style-type: none"> ELA 30-1 (min. 60%) or ELA 30-2 (min. 70%) Math 20-1 (min. 60%) or Math 20-2 (min. 70%) Biology 30 (min. 60%) or Bow Valley College ANAT 1101 (min. 60%) 	Graduates of the Practical Nurse program may find career opportunities in hospitals, medical clinics, continuing care facilities, assisted living facilities, and community agencies.
SERVICE DOG & CANINE STUDIES MANAGEMENT DIPLOMA	2 YEARS	<ul style="list-style-type: none"> ELA 30-1 or ELA 30-2 Science 30 or Biology 20 One 30-level, 5 credit subject 	<ul style="list-style-type: none"> ELA 30 Health Sciences 20, Environmental Science 20 or Earth Science 30 (Recommended: Health Sciences 20) One 30-level subject 	<ul style="list-style-type: none"> ELA 30-1 or ELA 30-2 Any 30-level Science is recommended 	Career opportunities may include owning and operating a kennel, dog grooming business, or training operation, or training dogs that assist individuals living with a variety of disabilities including autism, PTSD, diabetes, epilepsy, those who are hard of hearing, or have physical or medical disabilities. →
SOCIAL WORK DIPLOMA <i>APPLICATION DEADLINE MAY 1</i>	2 YEARS	<p>A minimum of 60% in each of the following:</p> <ul style="list-style-type: none"> ELA 30-1 Two 30-level academic subjects One 30-level, 5-credit subject 	<p>A minimum of 60% in each of the following:</p> <ul style="list-style-type: none"> ELA 30 Two 30-level academic subjects One 30-level subject 	<p>A minimum of 60% in each of the following:</p> <ul style="list-style-type: none"> ELA 30-1 or transferrable equivalent Two 30-level academic subjects or post-secondary transfer courses 	Graduates may find employment with government departments, school boards, group homes and residential services, health and mental health agencies, family and social service agencies, employment assistance, correctional services and agencies, addictions services, or non-profit community agencies.
SPEECH-LANGUAGE PATHOLOGIST ASSISTANT DIPLOMA Also offered online	2 YEARS	<p>High school diploma with a minimum of 60% in:</p> <ul style="list-style-type: none"> ELA 30-1 or ELA 30-2 Biology 30 Math 30-1, Math 30-2 or a 30-level Science One 30-level, 5-credit subject 	<p>High school diploma with a minimum of 60% in:</p> <ul style="list-style-type: none"> ELA 30 Biology 30 Pre-Calculus 30, Foundations of Math 30 or a 30-level Science One 30-level subject 	<p>A minimum of 60% in:</p> <ul style="list-style-type: none"> ELA 30-1 or ELA 30-2 Biology 30 	Speech Language Pathologist Assistants are prepared to find employment with health regions, hospitals, schools, day cares and preschools, rehabilitation centres, and private practices.
SPORT & EVENT MARKETING AND MANAGEMENT DIPLOMA <i>Flex</i>	2 YEARS	<ul style="list-style-type: none"> ELA 30-1 or ELA 30-2 Two 30-level, 5-credit subjects 	<ul style="list-style-type: none"> ELA 30 Two 30-level subjects 	<ul style="list-style-type: none"> ELA 30-1 or ELA 30-2 	Career opportunities may include entertainment account coordinator, sport/event marketing coordinator, experiential marketing or fan experience coordinator, social media/digital marketing coordinator, brand ambassador, recreation/athletics coordinator, or sports agent. Market research, advertising and sales, sponsorship, event management, public relations, or merchandising are examples of related activity. →
SUSTAINABLE ENERGY SYSTEMS PROFESSIONAL CERTIFICATE <i>NEW</i>	1 YEAR	<ul style="list-style-type: none"> ELA 30-1 or ELA 30-2 	<ul style="list-style-type: none"> ELA 30 	<ul style="list-style-type: none"> ELA 30-1 or ELA 30-2 or 10+ years of industry experience, or Journeyman or Red Seal Certification 	Graduates may find employment across almost all public or private sectors that engage in the design and construction of the built environment. Positions within different sectors of Canada include management of construction, operation and management of facilities, renewable energy generation industries, and building management and renovation. Self-employment opportunities include professional consulting in auditing, design and supervision.
SUSTAINABLE INNOVATION DIPLOMA <i>Flex</i>	2 YEARS	<ul style="list-style-type: none"> ELA 30-1 or ELA 30-2 Two 30-level, 5-credit subjects 	<ul style="list-style-type: none"> ELA 30 Two 30-level subjects 	<ul style="list-style-type: none"> ELA 30-1 or ELA 30-2 	Possible careers include research and development coordinator, marketing and innovation project coordinator, service representative, or sustainable construction specialist. →

Click the QR code to watch the video.

Click the QR code to watch the video.

Click the QR code to watch the video.

* COMPETITIVE ENTRANCE (REFER TO PAGE 35 FOR MORE DETAILS)

*FOR OTHER PROVINCIAL EQUIVALENCIES AND A LIST OF ACADEMIC SUBJECTS, SEE PAGE 35.

APPLIED DEGREES & DEGREES

3-4 year programs

Unless otherwise stated, a minimum grade of 50% is required for all subjects.

PROGRAM	LENGTH	ALBERTA ADMISSION REQUIREMENTS	SASKATCHEWAN ADMISSION REQUIREMENTS	MATURE ADMISSION REQUIREMENTS (AGE 21 OR OLDER)	CAREER OPPORTUNITIES
ART & DESIGN, BACHELOR OF APPLIED ARTS	3 YEARS	<ul style="list-style-type: none"> • ELA 30-1 or ELA 30-2 	<ul style="list-style-type: none"> • ELA 30 	<ul style="list-style-type: none"> • ELA 30-1 or ELA 30-2 	Employment opportunities are available in a variety of workplace locations, including print shops, design studios, publishing houses, film studios, television stations, theatres, museums and art galleries, and other places involved in visual and digital production. Many Art & Design graduates have gone on to start their own graphic design, photography, and video production businesses.
<p>* EDUCATION, BACHELOR OF IN PARTNERSHIP WITH MOUNT ROYAL UNIVERSITY EARLY APPLICATION DEADLINE DECEMBER 1 FINAL APPLICATION DEADLINE APRIL 1</p>	2 YEARS + 2 YEARS	<p>To be eligible for admissions a student must have successfully completed 60 credits of approved university course work and meet competitive GPA.</p> <p>To complete university coursework, students will enroll in University Transfer: Education for their first two years at MHC. Refer to University Transfer: Education on page 32 for admission requirements.</p>	<p>To be eligible for admissions a student must have successfully completed 60 credits of approved university course work and meet competitive GPA.</p> <p>To complete university coursework, students will enroll in University Transfer: Education for their first two years at MHC. Refer to University Transfer: Education on page 32 for admission requirements.</p>	<p>To be eligible for admissions a student must have successfully completed 60 credits of approved university course work and meet competitive GPA.</p> <p>To complete university coursework, students will enroll in University Transfer: Education for their first two years at MHC. Refer to University Transfer: Education on page 32 for admission requirements.</p>	Professional opportunities may include teacher, educational administrator or policy maker.
<p>* NURSING, BACHELOR OF SCIENCE IN PARTNERSHIP WITH THE UNIVERSITY OF CALGARY APPLICATION DEADLINE MAY 1</p>	4 YEARS	<p>Overall average of 65% with no mark below 50% in:</p> <ul style="list-style-type: none"> • ELA 30-1 • Biology 30 • Chemistry 30 or Science 30 • Math 30-1 or Math 30-2 • One additional 30-level subject (if under 21) OR CTS courses totaling at least 5 credits from the approved list on UCalgary website OR Work Experience 35 <p>If you have previous post-secondary education you should meet with the MHC Nursing Advisor for information on how your coursework will be considered in the admissions process.</p>	<p>Overall average of 65% with no mark below 50% in:</p> <ul style="list-style-type: none"> • ELA 30 • Biology 30 • Chemistry 30 • Pre-Calculus 30 or Foundations of Math 30 • One 30-level subject <p>If you have previous post-secondary education you should meet with the MHC Nursing Advisor for information on how your coursework will be considered in the admissions process.</p>	<p>Overall average of 65% with no mark below 50% in:</p> <ul style="list-style-type: none"> • ELA 30-1 • Biology 30 • Chemistry 30 or Science 30 • Math 30-1 or Math 30-2 <p>If you have previous post-secondary education you should meet with the MHC Nursing Advisor for information on how your coursework will be considered in the admissions process.</p>	Graduates may find employment with regional health authorities, clinics (medical, dental and community), nursing homes, home care agencies, large corporations and insurance companies, or government services (e.g. penitentiaries).
<p>* PARAMEDIC, BACHELOR OF APPLIED HEALTH SCIENCE APPLICATION DEADLINE APRIL 20</p>	4 YEARS	<p>Overall average of 60% with no mark below 50% in:</p> <ul style="list-style-type: none"> • ELA 30-1 • Biology 30 • Math 30-1 or Math 30-2 • One 30-level, 5 credit subject (Chemistry 30 is recommended) 	<p>Overall average of 60% with no mark below 50% in:</p> <ul style="list-style-type: none"> • ELA 30 • Biology 30 • Pre-Calculus 30 or Foundations of Math 30 • One 30-level subject (Chemistry 30 is recommended) 	<p>Overall average of 60% with no mark below 50% in:</p> <ul style="list-style-type: none"> • ELA 30-1 • Biology 30 • Math 30-1 or Math 30-2 	Graduates may find employment with public and private ambulance services provincially, nationally and internationally. Paramedics also work in a variety of industrial and community-based emergency health settings.



student voice

GRACE MASTEL
 Bachelor of Applied Arts, Art & Design

"Creating the mural was a study in contradictions. It added more to our plate at a busy and stressful time, but through its creation it served as a reminder of the self-care and mental wellness we need in our daily lives. Our hope for the mural is that it reminds those who pass by to do all the little things for themselves and others that act as a balm to the soul."



* COMPETITIVE ENTRANCE (REFER TO PAGE 35 FOR MORE DETAILS)

*FOR OTHER PROVINCIAL EQUIVALENCIES AND A LIST OF ACADEMIC SUBJECTS, SEE PAGE 35.

UNIVERSITY TRANSFER

start your degree here

PROGRAM	ALBERTA ADMISSION REQUIREMENTS	SASKATCHEWAN ADMISSION REQUIREMENTS	MATURE ADMISSION REQUIREMENTS (AGE 21 OR OLDER)	CAREER OPPORTUNITIES
ARTS VARIETY OF MAJORS	<ul style="list-style-type: none"> • ELA 30-1 • Math 30-1 or Math 30-2 or a 30-level second language • Two 30-level academic subjects • One 30-level, 5 credit subject (excluding Special Projects) <p><i>NOTE: Some majors at some universities require Math 30-1 or Math 30-2.</i></p>	<ul style="list-style-type: none"> • ELA 30 • Pre-Calculus 30 or Foundations of Math 30 or a 30-level second language • Two 30-level academic subjects • One 30-level subject (excluding Special Projects) <p><i>NOTE: Some majors at some universities require Pre-Calculus 30 or Foundations of Math 30.</i></p>	<ul style="list-style-type: none"> • ELA 30-1 • One 30-level academic subject <p><i>NOTE: Some majors at some universities require Math 30-1 or Math 30-2.</i></p>	<p>An education in Arts can serve as the foundation for many different areas of interest. Some professional degree programs offered at universities, such as Law, require a degree in a discipline such as Arts before admission is granted.</p>
COMMERCE / MANAGEMENT	<ul style="list-style-type: none"> • ELA 30-1 • Math 30-1 • Two 30-level academic subjects • One 30-level, 5 credit subject (excluding Special Projects) 	<ul style="list-style-type: none"> • ELA 30 • Pre-Calculus 30 • Two 30-level academic subjects • One 30-level subject (excluding Special Projects) 	<ul style="list-style-type: none"> • ELA 30-1 • Math 30-1 	<p>Depending on the chosen major, graduates of a Commerce, Business Administration or Management degree program may find work as an accounting technician, event marketing representative, marketing researcher, accounts manager trainee, event coordinator, merchandiser/buyer, accounts payable or accounts receivable clerk, office manager or fundraiser.</p>
EDUCATION APPLICATION DEADLINE MAY 1	<ul style="list-style-type: none"> • ELA 30-1 (min. 60%) • Three 30-level academic subjects • One 5-credit or two 3-credit subjects at the 30-level (excluding Special Projects) <p><i>NOTE: Although not required for admission, it is strongly suggested that students entering Education possess Math 30-1 or Math 30-2.</i></p>	<ul style="list-style-type: none"> • ELA 30 (min. 60%) • Three 30-level academic subjects • One 30-level subject (excluding Special Projects) <p><i>NOTE: Although not required for admission, it is strongly suggested that students entering Education possess Pre-Calculus 30 or Foundations of Math 30.</i></p>	<ul style="list-style-type: none"> • ELA 30-1 (min. 60%) • Pre-requisite courses required, e.g. Chem 30 required for university level Chemistry <p><i>NOTE: Although not required for admission, it is strongly suggested that students entering Education possess Math 30-1 or Math 30-2.</i></p>	<p>Professional opportunities may include teacher, educational administrator or policy maker.</p>
KINESIOLOGY Must apply under University Transfer Bachelor of Science	<ul style="list-style-type: none"> • ELA 30-1 • Biology 30 • Chemistry 30 • Math 30-1 • One 30-level, 5 credit subject (excluding Special Projects) Physics 30 recommended. <p><i>NOTE: Students should be aware that some universities require Physics 30</i></p>	<ul style="list-style-type: none"> • ELA 30 • Biology 30 • Chemistry 30 • Pre-Calculus 30 • One 30-level subject (excluding Special Projects) Physics 30 recommended. <p><i>NOTE: Students should be aware that some universities require Physics 30</i></p>	<ul style="list-style-type: none"> • ELA 30-1 • Biology 30 • Chemistry 30 • Math 30-1 <p><i>NOTE: Students should be aware that some universities require Physics 30</i></p>	<p>Possible careers include coach, exercise physiologist, athletic therapist, fitness specialist, consultant, researcher, adaptive physical activity specialist, athletic director, recreation coordinator, registered kinesiologists.</p>
PRE-PROFESSIONAL PROGRAMS <ul style="list-style-type: none"> • PRE-DENTAL HYGIENE • PRE-DENTISTRY • PRE-MEDICAL LABORATORY SCIENCE • PRE-MEDICINE • PRE-NUTRITION • PRE-PHARMACY • PRE-VETERINARY 	<p>Refer to University Transfer Science below for admission requirements.</p> <p><i>Students will apply to University Transfer: Science.</i></p>	<p>Refer to University Transfer Science below for admission requirements.</p> <p><i>Students will apply to University Transfer: Science.</i></p>	<p>Refer to University Transfer Science below for admission requirements.</p> <p><i>Students will apply to University Transfer: Science.</i></p>	
SCIENCE VARIETY OF MAJORS	<ul style="list-style-type: none"> • ELA 30-1 • Math 30-1 • Any two of Biology 30, Chemistry 30 or Physics 30 <p><i>NOTE: Students should be aware that different majors will require different combinations of Science courses.</i></p>	<ul style="list-style-type: none"> • ELA 30 • Pre-Calculus 30 • Any two of Biology 30, Chemistry 30 or Physics 30 <p><i>NOTE: Students should be aware that different majors will require different combinations of Science courses.</i></p>	<ul style="list-style-type: none"> • ELA 30-1 • Math 30-1 • Any two of Biology 30, Chemistry 30 or Physics 30 <p><i>NOTE: Students should be aware that different majors will require different combinations of Science courses.</i></p>	<p>Career choices vary depending on which science major or professional degree is selected.</p>
SOCIAL WORK Must apply under University Transfer Bachelor of Arts	<ul style="list-style-type: none"> • ELA 30-1 • Math 30-1 or Math 30-2 or a 30-level second language • Two 30-level academic subjects • One 30-level, 5 credit subject (excluding Special Projects) <p><i>Note: Some universities require Social 30-1 or Aboriginal Studies 30.</i></p>	<ul style="list-style-type: none"> • ELA 30 • Pre-Calculus 30 or Foundations of Math 30 or a 30-level second language • Two 30-level academic subjects • One 30-level subject (excluding Special Projects) <p><i>Note: Some universities require Social Studies 30, History 30 or Native Studies 30.</i></p>	<ul style="list-style-type: none"> • ELA 30-1 • One 30-level academic subject <p><i>Note: Some universities require Social 30-1 or Aboriginal Studies 30.</i></p>	<p>Graduates may find employment opportunities with government departments, school boards, hospitals and continuing care organizations, mental health clinics, family and social service agencies, correctional services and agencies or non-profit community agencies.</p>

NOTE: Unless otherwise stated, mandatory courses require a minimum average of 60% for admission with no individual mark below 50% for admission into university transfer programs.

*FOR OTHER PROVINCIAL EQUIVALENCIES AND A LIST OF ACADEMIC SUBJECTS, SEE PAGE 35.

APPRENTICESHIP

3-4 year programs

PROGRAM	LENGTH	ALBERTA ENTRANCE REQUIREMENTS	SASKATCHEWAN ENTRANCE REQUIREMENTS	MATURE ENTRANCE REQUIREMENTS (AGE 21 OR OLDER)
CARPENTER	4 YEARS	<ul style="list-style-type: none"> • ELA 10-2 • Math 10-3 	<ul style="list-style-type: none"> • ELA 10 • Workplace and Apprenticeship Math 10 	<ul style="list-style-type: none"> • ELA 10-2 • Math 10-3
WELDER	3 YEARS	<ul style="list-style-type: none"> • A pass mark in all five Canadian (GED) tests of Canadian Adult Education Credential (CAEC) tests OR • Entrance Exam 	<ul style="list-style-type: none"> OR • A pass mark in all five Canadian (GED) tests of Canadian Adult Education Credential (CAEC) tests OR • Entrance Exam 	<ul style="list-style-type: none"> • A pass mark in all five Canadian (GED) tests of Canadian Adult Education Credential (CAEC) tests OR • Entrance Exam
AUTOMOTIVE SERVICE TECHNICIAN	4 YEARS	<ul style="list-style-type: none"> • ELA 20-2 • Math 20-3 • Science 10 	<ul style="list-style-type: none"> • ELA 20 • Workplace and Apprenticeship Math 20 	<ul style="list-style-type: none"> • ELA 20-2 • Math 20-3 • Science 10
ELECTRICIAN	4 YEARS	<ul style="list-style-type: none"> OR • A pass mark in all five Canadian (GED) tests of Canadian Adult Education Credential (CAEC) tests 	<ul style="list-style-type: none"> OR • Science 10 	<ul style="list-style-type: none"> OR • A pass mark in all five Canadian (GED) tests of Canadian Adult Education Credential (CAEC) tests
HEAVY EQUIPMENT TECHNICIAN	4 YEARS	<ul style="list-style-type: none"> OR • Entrance Exam 	<ul style="list-style-type: none"> OR • A pass mark in all five Canadian (GED) tests of Canadian Adult Education Credential (CAEC) tests 	<ul style="list-style-type: none"> OR • Entrance Exam
PLUMBER	4 YEARS	<ul style="list-style-type: none"> • Entrance Exam 	<ul style="list-style-type: none"> OR • Entrance Exam 	<ul style="list-style-type: none"> • Entrance Exam
STEAMFITTER-PIPEFITTER	4 YEARS			

Admissions are done through Alberta Apprenticeship and Industry Training.

MEDICINE HAT COLLEGE TRADES

403.529.3975

HOW DO I START AN APPRENTICESHIP?

- **STEP 1**
Find an employer willing to hire you as an apprentice.
- **STEP 2**
Register as an apprentice.
- **STEP 3**
Begin working and log your hours.
- **STEP 4**
Attend technical training.

For more information, visit tradesecrets.alberta.ca.



* COMPETITIVE ENTRANCE

Please note that some programs at Medicine Hat College follow a competitive admission process. This means that we receive more applications than there is space in the program and will admit students who possess the highest grades in the courses required for admission to that program. The minimum grade requirements listed for admission are rarely sufficient for a successful application.

The competitive admission average cannot be determined in advance as it depends on the grades achieved by others who are also applying to the same program. Students who are interested in a competitive program are encouraged to apply as early as possible. All applicants to competitive programs will have an admission decision when final official transcripts are received.

ACADEMIC SUBJECTS

ALBERTA:

- Aboriginal Studies 30
- Biology 30
- Chemistry 30
- Mathematics 30-1 or 30-2
- Mathematics 31
- Physics 30
- Science 30
- Social Studies 30-1
- One or more distinct 30-level language(s) (ex. French 30)
- 5 credits in advanced level CTS Computer Science (CSE)

One of:

- Art 30 or Art 31
- Choral Music 30
- Dance 35
- Drama 30
- General Music 30
- Instrumental Music 30

SASKATCHEWAN:

- Biology 30
- Calculus 30
- Chemistry 30
- Computer Science 30
- Earth Science 30
- Francais Fransaskois A30 or B30
- Geography 30
- History 30
- Pre-Calculus 30 or Foundations of Math 30
- Native Studies 30
- Physics 30
- Social Studies 30

One of:

- One or more distinct 30-level language(s) (ex. French 30)
- Law 30
- Psychology 30

One of:

- Arts Education 30
- Band 30
- Choral 30
- Dance 30
- Drama 30
- Instrumental Jazz 30
- Visual Art 30

OTHER PROVINCES:

If you are from outside of Alberta or Saskatchewan, please view other provincial high school equivalencies for various subjects by going to www.mhc.ab.ca/admission.

Questions? Contact the Advising office at 403.529.3819.





How to apply

To apply or request more information, go to www.mhc.ab.ca/admission.

Visit

OPEN HOUSE

Want to experience MHC and learn more about our programs? MHC will host an Open House at the Medicine Hat Campus on **November 12, 2025**, and at the Brooks Campus on **November 5, 2025**. Check out the campus, learn more about our programs and connect with your future instructors. We'll support you through the application process so you finish the day one step closer to becoming an MHC student!

BOOK A CAMPUS TOUR

Medicine Hat College offers campus and residence tours to prospective students. This is a great opportunity to see our amazing facilities first-hand. To book a tour, call **403.504.2283** or email info@mhc.ab.ca.



APPLY NOW!



**MEDICINE HAT
COLLEGE**



CELEBRATING
60 YEARS



WWW.MHC.AB.CA

info@mhc.ab.ca

MEDICINE HAT CAMPUS:
299 COLLEGE DR. SE
MEDICINE HAT, AB / T1A 3Y6

BROOKS CAMPUS:
200 HORTICULTURAL STATION RD E
BROOKS, AB / T1R 1E5



MEDICINE HAT COLLEGE
ADVISING OFFICE 403.529.3819
BROOKS CAMPUS 403.362.1677
CAMPUS VISIT 403.504.2283
MEDICINE HAT CAMPUS 403.529.3811
STUDENT RESIDENCE 403.529.3820
TOLL FREE 1.866.282.8394