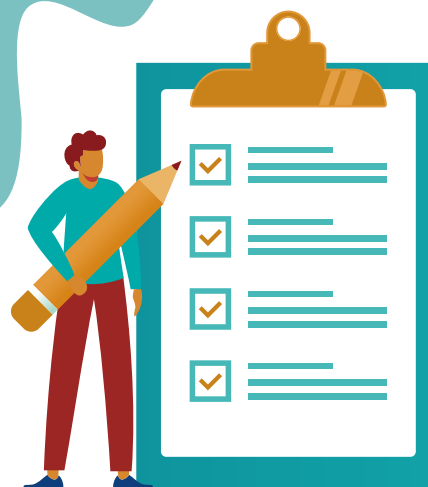


# International Student Application Process

Take the first step toward your future at Medicine Hat College. Our international student application process is simple and designed to guide you from program selection to admission. MHC is here to support you every step of the way.

Study at MHC [www.mhc.ab.ca/information-for/international/study-at-mhc](http://www.mhc.ab.ca/information-for/international/study-at-mhc)



## Explore & Select Program

Medicine Hat College (MHC) offers certificate, diploma, applied degree and university transfer programs in the areas of arts, education, business, health, science, trades and technology.

Study at MHC -  
International Student



## Applicant Referral

Applicants may be referred to International Education for an information session and interview.



## Pay Deposit

Once accepted, make sure to pay the full \$5000 + \$10,000 tuition installment (\$15,000 total) within 21 days to secure your seat.



## Submit Application

Please apply at [www.applyalberta.ca](http://www.applyalberta.ca).  
For additional information, please contact [inted@mhc.ab.ca](mailto:inted@mhc.ab.ca).

A non-refundable application fee of \$125 is due at the time of application. This fee is non-refundable in all cases and an application may be refused at any time if it is determined there is no reasonable chance to secure a study permit.



## Study Permit

When all requirements are met and your deposit is received by MHC, you will receive your Study Permit Acceptance Letter (SPAL) and Provincial Attestation letter (PAL) directly to your MHC email. These documents will be required for your study permit application.

For more information on applying for a study permit for entry to Canada as an international student, please scan the QR code below.



## Submit Supporting Documentation

Please submit official transcripts, a passport copy, admit/scratch card, and ELP results if applicable to [registration@mhc.ab.ca](mailto:registration@mhc.ab.ca).

Electronic documents sent directly by the school or department of education can be emailed to [admissions@mhc.ab.ca](mailto:admissions@mhc.ab.ca) or mailed to:

Medicine Hat College  
Registrar's Office  
229 College Drive SE  
Medicine Hat, Alberta, Canada  
T1A 3Y6

IRCC QR Code

